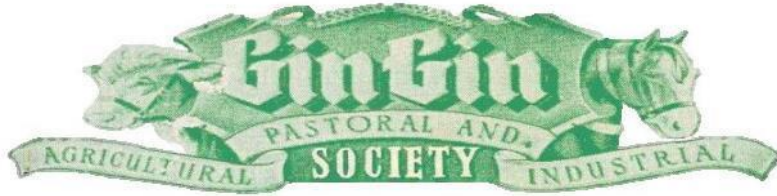


GIN GIN A P & I SOCIETY INC.

PRESENTS THE

# 110<sup>th</sup> GIN GIN SHOW



Saturday 1<sup>st</sup> June & Sunday 2<sup>nd</sup> June 2019

## SHOW SCHEDULE & PROGRAM



2018 Prime Cattle - Photo Courtesy Dale Hunter

**FREE Children's Entertainment all weekend!**

*\*Old MacDonald's Farm*

*\*Pig Races*

*\*Mini Kids Bouncy Rodeo*

*\*Gladiator Duel*

*\*Fireworks*

**ADMISSION:**

Prepaid Weekend Passes Family - \$25, Single - \$13 (available at the Show Office)

Gate Price - Weekend Family - \$30 (2 adults & school age children)

Gate Price / Day Single - \$12 Pensioners & High School \$6

Primary \$1 Preschool Free

**ENQUIRIES:**

Email: [ginginshow@bigpond.com](mailto:ginginshow@bigpond.com)

Secretary – Jacque Eden

Office: 41 572254

A/H - 0407 572 484

Website: [www.ginginshowsociety.com.au](http://www.ginginshowsociety.com.au)

**Office Hours: To 1 May, Wed 9am-12.30; 8-16 May, Wed & Thurs 9am-1pm; 22-31 May, Mon-Friday 8.30am-4.30pm**

## **WHAT'S ON WHEN – at a glance**

### **Saturday**

7.30 Horse Events

8.30 Stud Cattle Judging

9.00 Prime Cattle Judging

Sugar Cane Judging

**Dog Show – Sports & Rec Grounds, north on Bruce H'way**

**Pavilion Opens** – Closes 8pm

10.30 Pig Races – Woodchop Arena (4 races - various times)

Young Judges & Handlers (after Stud Cattle Judging)

**All Day Canteen & Bar operating in the Function Centre**

\* Market Stalls \* Sideshow Alley

\* Free Children's Entertainment – Kids Korner

3.00pm **Grand Parade & Official Opening**



### **Saturday Evening**

4.00 Young Farmers Challenge

6.00 Evolution Twilight Woodchop Spectacular

7.45 Fireworks

Music by "Barlight" – Country Rock

**Canteen & Bar open until late**



### **Sunday**

8.00 Horse Events

8.30 Poultry

**Young Judges & Handlers – Subchamber Judging**

9.00 Ute Muster

9.30 Woodchop

10.00 Junior & Minis Farmers Challenge

11.00 Sporty Spectacular Horse Events

1.00 Dog High Jump

**All Day Canteen & Bar operating in the Function Centre**

Market Stalls Sideshow Alley

Free Children's Entertainment – Kids Korner



*FREE kids ENTERTAINMENT*



(Appearing Saturday only)

*All weekend!*





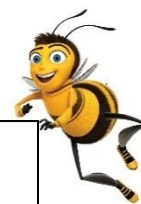
## CONTENTS

WHAT'S ON WHEN – at a glance .....	2
OFFICIALS .....	4
WELCOME .....	5
SHOW CONDITIONS.....	5
ENTRY FORM .....	6
SECTION 1 - HORSES.....	7
SECTION 2 - PRIME CATTLE .....	10
SECTION 3 - STUD CATTLE .....	12
JUNIOR JUDGES AND HANDLERS PROGRAM .....	13
Gin Gin Junior Judges & Handlers Competition .....	13
Burnett Subchamber Finals - Junior Judges & Handlers Competition .....	13
SECTION 4 – POULTRY.....	14
SECTION 5 – DOGS .....	16
SECTION 6 - SUGAR CANE.....	17
SECTION 7 - FARM PRODUCE .....	19
SECTION 8 – OPEN BAKING .....	22
SECTION 9 - JUVENILE BAKING .....	25
SECTION 10 – CONFECTIONERY, CAKE DECORATING & PRESERVES .....	26
SECTION 11 - FANCY WORK.....	29
SECTION 12 - FINE ARTS .....	33
SECTION 13 - CRAFT .....	34
SECTION 14 - PHOTOGRAPHY .....	37
SECTION 15 - SCRAPBOOKING.....	38
SECTION 16 - PLANTS and FLOWERS.....	39
DON DINGLE MEMORIAL .....	42
SECTION 17 - WOODCHOPPING .....	43
SECTION 18 – STATE UTE MUSTER.....	45
SECTION 19 – DOG HIGH JUMP.....	46
YOUNG FARMERS CHALLENGE.....	47
MINI & JUNIOR FARMERS CHALLENGES.....	47
SPONSORS.....	48
MAP OF THE GROUNDS.....	50
VALE LANCE CISLOWSKI .....	51

***The theme for the 2019 Show is “When bees thrive, we all thrive!”***

***Did you know...***

...honey bees are responsible for pollinating agricultural crops  
that make up one-third of our diet, including fruits and vegetables



## **OFFICIALS**

PATRON	Hazle Marland OAM
PRESIDENT	Kerryn Flanders
VICE PRESIDENTS	Tyler Bengston, Sam Eden, Amanda Mittelheuser
SECRETARY	Jacque Eden
ASSISTANT SECRETARY	Kate Shaw
TREASURER	Miriam Newman
ASSISTANT TREASURER	Tina Stehbens

### **LIFE MEMBERS**

Dianne Bailey	Hazle Marland OAM	Barbara Stevens
Vivian Campbell	Jack McIntyre	Brian Tobin
Beatrice Cooke	Jo McIntyre	Jan Tobin
Nell Finlay	Arden Pohlman	Doug Wakelin
Graeme Claxton	Bruce Sellars	Ian Walker
Lloyd Howard	Ailsa Stevens	Graham Wilson
John Leather	Alan Stevens	

### **QCAS REPRESENTATIVES**

Amanda Mittelheuser, John Hunter

### **CHIEF STEWARDS**

Veterinary	Dr Andrew Marland	4157 3991
Pavilion	Connie Dyke	0437 011677
	Kate Shaw	0427 636 658
Grounds	Andrew Maughan	0428 113 407
Gatekeeper	Andrew Kelly	0428 232 204
Bar	Steve Bechly	0407 558 582
Canteen	Hayley Dwyer	0437 823 292
Show Ball	Nadia Gillies	0427 066982

### **Sections**

1	Horses	Elva Christensen	0427 260 161
2	Prime Cattle	Cam Christensen	0409 638 283
		Sam Christensen	0418 808 580
3	Stud Cattle	Dan Matthew	0407 595 359
4	Poultry	Ray Manderson	4157 2110
5	Dogs	Jane Armatys	4157 2758
6	Sugar Cane	Alan Stevens	0427 987 179
		Sam Eden	0427 572 484
7	Farm Produce	Graham Betts	0407 074 163
8	Open Baking	Ellen Haydon	
9	Juvenile Baking	Jodie McCotter	0428 856 643
10	Confectionery, Cake	Leigh Johnson	0427 574 025
	Decorating & Preserves		
11	Fancy Work	Marion Pape	0418 780 722
12	Fine Arts	Sue Robinson	0429 789 266
13	Craft	Lyn Engstrom	4157 2496
14	Photography	Connie Dyke	0437 011 677
15	Scrapbooking	Monique Armstrong	4157 4191
16	Plants & Flowers	Jan Scott	0403 665 755
		Allison Scott	0403 665 754
17	Woodchop	Cameron Wesche	0408 720 535
18	Ute Muster	Jo Macdonald	0407 582 362
19	Dog High Jump	John Hunter	0422 166 964

## **WELCOME**

**Welcome to our new look Show Schedule** – we hope you like it! Though change can sometimes be difficult at first, we're sure you'll quickly appreciate the difference.

**Why have we done this?** The printed Schedule now mirrors exactly, the Schedule appearing on our website – that means no double handling for both our Secretary and website producer and less confusion for you!

**A list of contents at the front** will help you quickly find the Section you are looking for. The A4 layout means we can use a bigger font throughout, making it easier for you to read. A full size map at the back makes finding your way around the grounds a breeze.

**Website links** for nominations, camping, stabling and website are printed in blue – click on the hyperlink online and go straight to the page.

**The sponsors** of each Section are clearly listed in a blue text box giving them the recognition they deserve.

**And who doesn't like colour?** Printing this booklet in colour helps bring the fun and excitement of the Show to life.

**So please join us for the 2019 Gin Gin Show – enter your work in the Pavilion or join in the Ring events and farmers challenges. For those less energetic there's the Ute Muster or let your dog do all the work in Sunday's Dog High Jump!**

Whatever you decide, there's sure to be a few surprises in store for you.

### **Did you know...**

...the bee is the only insect that produces food eaten by man



## **SHOW CONDITIONS**

- ❖ Please refer to the relevant Show Conditions at the beginning of each Section
- ❖ Failure to comply may lead to disqualification and disappointment
- ❖ All Show Conditions are available for download on our website [www.ginginshowociety.com.au](http://www.ginginshowociety.com.au) A copy will be available at the Show Office or from the Stewards if required
- ❖ Stabling & camping forms are also available on the website, from the Show Office or Section Steward

**ENTRY FORM**

**PAVILION ENTRY FORM**

Section Number:

Please complete a **separate form** for **each section** you enter

Section Name:

Office Use	Class	Description	Entry Fee

NAME:  Phone:   
(Name you want on winning card)

EMAIL:

☐

TO BE AUCTIONED

☐

NOT TO BE AUCTIONED

☐

HOBBY

**\*For Business Entries Only**

☐

BUSINESS

**Please complete and sign the Exhibitors GST Declaration**

This declaration has tax implications if you receive prize money. I, the exhibitor named on this entry, apply to enter the exhibits on this application for entry as part of a business enterprise.

☐

I am NOT registered for GST

☐

I am registered for GST and my ABN is:

I hereby enter the above, subject to the rules and regulations of the Show Society.

Signature:

**SECTION 1 - HORSES**

**STEWARD:** Elva Christensen 4126 0161 or 04 2726 0161

**RING PROGRAM – SATURDAY 1 June 2019**

**7.30am START**

**RING 1**

Entry \$2 ~ 1st \$10, 2nd \$6, 3rd \$4

**Australian Stud Pony**

1. Led Stallion/Colt
2. Led Mare/Filly
3. Led Gelding

**CHAMPION & RESERVE APSA**

**Australian Saddle Pony**

4. Led Stallion/Colt
5. Led Mare/Filly
6. Led Gelding

**CHAMPION & RESERVE ASP**

**Any Other Bred Pony**

7. Led Stallion/Colt
8. Led Mare/Filly
9. Led Gelding

**CHAMPION & RESERVE Any Other Breed**

**Riding Pony**

10. Led Stallion/Colt
11. Led Mare/Filly
12. Led Gelding

**CHAMPION & RESERVE Riding Pony**

**Show Hunters**

13. Led Stallion/Colt
14. Led Mare/Filly
15. Led Gelding

**CHAMPION & RESERVE Show Hunter**

**Miniature Pony**

16. Led Stallion/Colt
17. Led Mare/Filly
18. Led Gelding

**CHAMPION & RESERVE Miniature Pony**

**Welsh Pony**

19. Led Stallion/Colt
20. Led Mare/Filly
21. Led Gelding

**CHAMPION & RESERVE Welsh Pony**

**Part Welsh**

22. Led Stallion/Colt
23. Led Mare/Filly
24. Led Gelding

**CHAMPION & RESERVE Part Welsh**

**RING 2**

Entry \$2 ~ 1st \$10, 2nd \$6, 3rd \$4

**Thoroughbred**

25. Led Stallion/Colt
26. Led Mare/Filly
27. Led Gelding

**CHAMPION & RESERVE T/B**

**ANSA**

28. Led Stallion/Colt
29. Led Mare/Filly
30. Led Gelding

**CHAMPION & RESERVE ANSA**

**Australian Stock Horse**

31. Led Stallion/Colt
32. Led Mare/Filly
33. Led Gelding

**CHAMPION & RESERVE ASH**

**Quarter Horse**

34. Led Stallion/Colt
35. Led Mare/Filly
36. Led Gelding

**CHAMPION & RESERVE QH**

**Arab – Pure Bred / Part**

37. Led Stallion/Colt
38. Led Mare/Filly
39. Led Gelding

**CHAMPION & RESERVE-ARAB**

**Any Other Breed (Registered over 14hh)**

40. Led Stallion/Colt
41. Led Mare/Filly
42. Led Gelding

**CHAMPION & RESERVE Any Other Breed**

**Led Miniature Horse**

43. Led Stallion/Colt
44. Led Mare/Filly
45. Led Gelding

**CHAMPION & RESERVE Miniature Horse**

**SUPREME LED EXHIBIT OF SHOW**

**Kevin Bennet Memorial Rug**

- Donated by the Devantier Family

**RING PROGRAM – SATURDAY (Continued)**

**RING 1**

Entry \$3 ~ 1<sup>st</sup> \$10, 2<sup>nd</sup> \$6, 3<sup>rd</sup> \$4

46. Girl/Boy Rider 5 yrs & under

47. Girl/Boy Rider 6 & under 8

48. Girl/Boy Rider 8 & under 10

49. Girl/Boy Rider 10 & under 12

**CHAMPION & RESERVE JUNIOR RIDER**

50. Girl/Boy Rider 12 & under 14

51. Girl/Boy Rider 14 & under 17

**CHAMPION & RESERVE SENIOR RIDER**

Entry \$3 ~ 1<sup>st</sup> \$15, 2<sup>nd</sup> \$10, 3<sup>rd</sup> \$5

52. Maiden Pony Hack

53. Novice Pony Hack

54. Pony Hack under 12hh

55. Pony Hack under 13hh

56. Pony Hack 13hh & under 14hh

57. District Pony Hack

58. Pony Hack for Mares

59. Pony Hack for Geldings

60. Show Hunter Pony Hack

61. Ridden Riding Pony\*

62. Ridden Saddle Pony\*

(\* not eligible for Champion)

**CHAMPION PONY HACK \$50**

**RESERVE PONY HACK**



**PROUD SPONSORS**

- ❖ *Devantier Family*
- ❖ *Marland Family*
- ❖ *Gin Gin Veterinary Clinic*
- ❖ *Ron Easy*

**RING 2**

Entry \$3 ~ 1<sup>st</sup> \$10, 2<sup>nd</sup> \$6, 3<sup>rd</sup> \$4

63. Novice Lady/Gent Rider

64. Open Lady/Gent Rider

**CHAMPION & RESERVE ADULT RIDER**

Entry \$3 ~ 1<sup>st</sup> \$15, 2<sup>nd</sup> \$10, 3<sup>rd</sup> \$5

65. Maiden Galloway Hack

66. Novice Galloway Hack

67. Galloway Hack 14hh – 14.2hh

68. Galloway Hack 14.2hh – 15hh

69. District Galloway Hack

70. Galloway Hack for Mares

71. Galloway Hack for Geldings

72. Show Hunter Galloway\*

(\* not eligible for Champion)

**CHAMPION & RESERVE GALLOWAY HACK**

73. Maiden Hack

74. Novice Hack (Light/Heavy)

(depend on nominations)

75. Open Hack 15hh – 15.2hh

76. Open Hack 15.2hh – 16hh

77. Open Hack over 16hh

78. District Hack

79. Hack for Mares

80. Hack for Geldings

81. Show Hunter Hack\*

82. Ridden T/B\*

83. Ridden ANSA\*

84. Ridden ASH-QH\*

85. Ridden ARAB\*

(\* not eligible for Champion)

**CHAMPION HACK \$50**

**RESERVE CHAMPION HACK**

**CHAMPION SHOW HUNTER OF THE SHOW \$50**

**RESERVE CHAMPION SHOW HUNTER**

**CHAMPION OF CHAMPION RIDER OF THE SHOW Under 17**

- Garland donated by Elva Christensen

**SUPREME HACK OF THE SHOW  
Jesse Campbell Memorial Trophy**



*If you don't want to keep your ribbons they can be deposited in the receptacle provided.*



## **JUMPING RING PROGRAM – SATURDAY 1 June 2019**

### **7:30am START**

86.	90cm AM5	Nom \$5	1 <sup>st</sup> \$50, 2 <sup>nd</sup> \$40, 3 <sup>rd</sup> \$30, 4 <sup>th</sup> \$20, 5 <sup>th</sup> \$10
87.	100cm AM5	Nom \$8	1 <sup>st</sup> \$80, 2 <sup>nd</sup> \$60, 3 <sup>rd</sup> \$40, 4 <sup>th</sup> \$20, 5 <sup>th</sup> \$10
88.	110cm Championship	Nom \$15	1 <sup>st</sup> \$150, 2 <sup>nd</sup> \$100, 3 <sup>rd</sup> \$80, 4 <sup>th</sup> \$60, 5 <sup>th</sup> \$40
89.	Gin Gin Vet Cross	Nom \$15	1 <sup>st</sup> \$150, 2 <sup>nd</sup> \$100, 3 <sup>rd</sup> \$80, 4 <sup>th</sup> \$60, 5 <sup>th</sup> \$40
	120cm Championship		

## **RING PROGRAM SUNDAY 2 June 2019**

### **8:00am START**

90.	60cm Clear Round	Nom \$5	Clear Round Prize Money Shared
91.	12 yrs & under AM5	Nom \$3	1 <sup>st</sup> \$20, 2 <sup>nd</sup> \$10, 3 <sup>rd</sup> \$5, 4 <sup>th</sup> \$5
92.	Ronnie Easy Junior	Nom \$5	1 <sup>st</sup> \$40, 2 <sup>nd</sup> \$30, 3 <sup>rd</sup> \$20, 4 <sup>th</sup> \$10
	Grand Prix		
93.	90cm Grand Prix	Nom \$8	1 <sup>st</sup> \$80, 2 <sup>nd</sup> \$60, 3 <sup>rd</sup> \$40, 4 <sup>th</sup> \$20
94.	Junior Six Bar	Nom \$3	1 <sup>st</sup> \$30, 2 <sup>nd</sup> \$20, 3 <sup>rd</sup> \$10, 4 <sup>th</sup> \$5

## **SPORTY SPECTACULAR EVENTS Sunday 2 June 2019**

### **11:00am START**

6yrs & under	A
7yrs to 10yrs	B
11yrs to 13yrs	C
14yrs to 16yrs	D
Open	E

Junior Entries \$10 for all 6 events  
1<sup>st</sup> \$5, 2<sup>nd</sup> \$3, 3<sup>rd</sup> \$2

Nom \$2 each event

1<sup>st</sup> \$10, 2<sup>nd</sup> \$6, 3<sup>rd</sup> \$4

- 95. Barrel Race
- 96. Bending Race
- 97. Running T
- 98. Stockhorse Race
- 99. Diamond Flag
- 100. Western Bend



### **CHAMPIONSHIP EVENT**

- |      |           |  |
|------|-----------|--|
| 101. | Scudda Ho | Nom \$5 ~ 1 <sup>st</sup> \$50, 2 <sup>nd</sup> \$30, 3 <sup>rd</sup> \$20 |
|------|-----------|--|

[Camping & Stabling Application](#)

[Back to Contents](#)

## **SECTION 2 - PRIME CATTLE**

**STEWARDS:** Cameron Christensen 0409 638 283  
Sam Christensen 0418 808 580  
Email: ggsprimecattle@gmail.com

**CLOSING DATE:** Monday 27 May 2019 at 5:00 pm or when yard is at capacity

**ENTRY FEE:** \$5 per class entry

### **Special conditions**

- ❖ Cattle exhibits MUST be bred by exhibitor.
- ❖ Nominations close Monday the 20<sup>th</sup> of May or when yard capacity is reached.
- ❖ According to the National Livestock Identification System (NLIS) all cattle entering the show grounds must carry an approved NLIS device. Cattle without a NLIS tag will not be accepted.
- ❖ In fairness for vendors complying with current bio security regulations we would prefer that all vendors have a J- BAS rating of 6 or higher.
- ❖ All cattle must be accompanied with a current NVD
- ❖ **All cattle must be delivered to the showgrounds between 10am and 4pm Friday the 31 May into the hands of the stewards.**
- ❖ All cattle are required to remain at the showgrounds until 12noon Sunday 2 June.
- ❖ All cattle are required to be mouthed and weighed within 14 days of the show
- ❖ Cattle will be mixed together with other vendors cattle in the single classes.
- ❖ Cattle for classes 2,3,4,5,7,8,9,10,11,12,14 are to be tail tagged with coloured tape available from stewards to indicate teeth as follows:
  - MILK TEETH      Blue
  - 2 TEETH          Yellow
  - 4 TEETH          Red
  - 6 TEETH          White
- ❖ Only dehorned and polled cattle will be accepted.
- ❖ All cattle are to be tick free.
- ❖ All exhibitors and visitors must remain outside the yards during the judging process.
- ❖ **Judging will commence at 8am on Saturday, 1 June.** Prizes and trophies will be presented following the judging of the prime cattle at approximately 11am.
- ❖ In all classes the judge will be looking for yield, temperament, early maturity & market suitability. If in his/her opinion any exhibit does not meet the criteria the judge may recommend to the stewards that any award be withheld.
- ❖ The opinion of the judge shall be final.

### ***PROUD SPONSORS***

- ❖ *Agricon Products*
- ❖ *Ag Services*
- ❖ *Apel Family*
- ❖ *Boylans Produce*
- ❖ *CS Horse Gear*
- ❖ *Double Diamond*
- ❖ *Elanora Park*
- ❖ *Brahmans*
- ❖ *Elders*
- ❖ *Finemore, Walters & Story*
- ❖ *Gin Gin Tyrepower*
- ❖ *Graincorp*
- ❖ *JBS Australia*
- ❖ *Kuskey Country*
- ❖ *Meats*
- ❖ *Landmark*
- ❖ *Northern Agri Services*
- ❖ *Riverina Stockfeeds*
- ❖ *Scott Warren*
- ❖ *Silvana Grazing Company*
- ❖ *Tobin Beef*
- ❖ *Thompson Longhorn*
- ❖ *Vaughans Transport*
- ❖ *Vetcross*

**Please send [nomination form](#) and entry fees to:**

Gin Gin AP & I Society Inc.  
Po Box 73  
Gin Gin QLD 4671



## PRIME CATTLE – CLASSES

### PASTURE FED

1. Single Steer or Heifer under 300kg live weight
2. Single milk tooth Heifer
3. Single two tooth Heifer
4. Single milk tooth Steer
5. Single two tooth Steer
6. Pair of Steers or Heifers under 300kg live weight
7. Pair of milk tooth Heifers
8. Pair of two tooth Heifers
9. Pair of four tooth Heifers
10. Pair of milk tooth Steers
11. Pair of two tooth Steers
12. Pair of four tooth steers
13. Pair of Replacement Heifers
14. Pair of six tooth Bullocks

### GRAIN ASSISTED

15. Single grain assisted Steer
16. Single grain assisted Heifer

### CHAMPION CLASSES

#### CHAMPION PASTURE FED YEARLING

- ❖ Judged from 1st place getters of classes 1 & 6

#### CHAMPION PASTURE FED FEMALE

- ❖ Judged from 1st place getters of classes 2,3,7,8,9,13,14

#### CHAMPION PASTURE FED STEER

- ❖ Judged from 1st place getters of class 4,5,10,11,12

#### GRAND CHAMPION PRIME EXHIBIT

- ❖ Judged from 1st place getters of champion classes

#### MOST POINTS

- ❖ Exhibitor with the most points



Whether you're looking for a *cuppa & a bite to eat* or a *cold beer* pop into to our **Function Centre** & see our *Show Society* volunteers



[Back to Contents](#)



### **SECTION 3 - STUD CATTLE**

**SATURDAY 1 JUNE & SUNDAY 2 JUNE 2019**

**STEWARD:** Dan Matthew 0407 595 359

**RING PROGRAM SATURDAY 1 June 2019**

[Entry Form](#)

**RING 1 – Start at 8.30 am**

**Bos Tauris & Bos Indicus** classes will be run consecutively throughout the program

**PRIZE MONEY:** 1st \$30, 2nd \$20, 3rd \$10 unless otherwise stated

**ENTRY FEE:** \$10      **NOMINATIONS CLOSE:** 5pm Thurs 30 May 2019

1. Bull Under 12 months
2. Bull 12 months & under 16 months
3. Bull 16 months & under 20 months

JUNIOR CHAMPION BULL - \$50

RESERVE JUNIOR CHAMPION BULL - \$25

4. Bull 20 months & under 24 months
5. Bull 24 months & under 30 months
6. Bull 30 months & over
7. Pair of Bulls

SENIOR CHAMPION BULL - \$50

RESERVE SENIOR CHAMPION BULL - \$25

**GRAND CHAMPION BULL - \$75**

8. Female Under 12 months
9. Female 12 months & under 16 months
10. Female 16 months & under 20 months

JUNIOR CHAMPION FEMALE - \$50

RESERVE JUNIOR CHAMPION FEMALE - \$25

11. Female 20 months & under 24 months
12. Female 24 months & under 30 months
13. Female 30 months & over
14. Pair of Females

SENIOR CHAMPION FEMALE - \$50

RESERVE SENIOR CHAMPION FEMALE - \$25

**GRAND CHAMPION FEMALE \$75**

**SUPREME EXHIBIT OF SHOW - \$100**



#### *PROUD SPONSORS*

- ❖ *Anipro*
- ❖ *Bendigo Bank - Gin*
- ❖ *Gin Community Bank*
- ❖ *Boylans Produce*
- ❖ *Elders Rural*
- ❖ *H Dowling & Sons*
- ❖ *Riverina Stockfeeds*
- ❖ *Volp Sawmill*





## **Led Steer or Heifer can be of any breed or cross of cattle**

15. Light weight Led Steer or Heifer Milk Teeth
16. Heavy weight Led Steer or Heifer Milk Teeth
17. Exhibitors Group (consists of three animals, both sex shown in previous classes)

## **MOST SUCCESSFUL STUD CATTLE EXHIBITOR**

Points awarded 1<sup>st</sup> - 5, 2<sup>nd</sup> - 3, 3<sup>rd</sup> - 1

## **Perpetual Trophy Awarded**

### ***JUNIOR JUDGES AND HANDLERS PROGRAM***

#### ***Gin Gin Junior Judges & Handlers Competition***

**Saturday 1 June 2019 at completion of the Stud Cattle Competition**

❖ Winners eligible to compete in Burnett Subchamber finals Sunday 2 June 2019

1. Junior Handler 15 years & over
2. Junior Handler under 15 years

#### **CHAMPION HANDLER**

3. Junior Stud Cattle Judge 15 years & over
4. Junior Stud Cattle Judge under 15 years
5. Junior Prime Cattle Judge 15 years & over
6. Junior Prime Cattle Judge under 15 years

#### **CHAMPION JUDGE**



### ***Burnett Subchamber Finals - Junior Judges & Handlers Competition***

**To be held on Sunday 2 June 2019 @ 8:00 am**

1. Junior Handler 15 years & over
2. Junior Handler under 15 years

#### **CHAMPION HANDLER**

3. Junior Stud Cattle Judge 15 years & over
4. Junior Stud Cattle Judge under 15 years
5. Junior Prime Cattle Judge 15 years & over
6. Junior Prime Cattle Judge under 15 years

#### **CHAMPION JUDGE**



Winners are eligible  
to compete at the 2019 Ekka!  
Good luck everyone!

[Back to Contents](#)

**SECTION 4 – POULTRY**

**SUNDAY 2 June 2019**

**ENTRIES CLOSE:** 30 May 2019 (No late entries will be accepted)

**STEWARD:** Ray Manderson 0456 577 324

**JUDGES:** TBA

**ENTRY FEE:** \$1 in all classes

<b>PRIZES:</b>	Grand Champion Fowl	\$50		
	Reserve Champion Fowl	\$25		
	Grand Champion Waterfowl	\$25		
	Single Classes	1 <sup>st</sup> \$2	2 <sup>nd</sup>	\$1

Trophy Prizes awarded in all sections. If less than three entries, no second prize awarded.

**ALL EXHIBITS MUST BE PENNED BY 8.00am on the day of the show**

**Judging to commence at 8:30am**

**SPECIAL CONDITIONS:**

- The age of cockerels and pullets must not exceed one year
- All exhibits must be penned by 8:00am SUNDAY and thereafter no person other than judges or stewards may interfere in any way with any exhibit
- All Junior Exhibitors must be under 16 years old and must handle their own birds (Pure Breeds Only).
- All eggs laid while exhibits are penned shall become property of the society
- Penning – Saturday between 6:00 pm ~ 8:30 pm &  
Sunday between 6:00 am ~ 8:00 am
- No late entries accepted
- If wishing to confirm entries, please phone **Steward** on **0456 577 324** no later than **TUESDAY 28 May 2019**

**Note:** Entry fees must accompany entries

**ALL ENTRIES TO BE FORWARDED TO:**

**Ray Manderson**

**P.O. Box 142**

**Gin Gin Qld 4671**

Please Phone any enquiries to: 0456 577 324

SOCIETY'S CHAMPION CARDS AND RIBBONS FOR -

**DIVISION 1 (Hardfeather Large)**

Champion Male

Res Champion Male

Champion Female

Res Champion Female

Champion Large

**DIVISION 3 (Sofffeather Large)**

Champion Male

Res Champion Male

Champion Female

Res Champion Female

Champion Large

**DIVISION 5 & 6**

Champion Bantam Waterfowl

Champion Large Waterfowl

**DIVISION 8**

Champion Pair of Females

Hardfeather Large

Hardfeather Bantam

Softfeather Large

Softfeather Bantam

\* **Best Pit Game**      **Donated by Ray Manderson**

\* **Best O.E.G.**        **Donated by Ray Manderson**

**DIVISION 2 (Hardfeather Bantam)**

Champion Male

Res Champion Male

Champion Female

Res Champion Female

Champion Bantam

**DIVISION 4 (Sofffeather Bantam)**

Champion Male

Res Champion Male

Champion Female

Res Champion Female

Champion Bantam

**DIVISION 7**

Champion Exhibition Pair

Hardfeather Large

Hardfeather Bantam

Softfeather Large

Softfeather Bantam

**DIVISION 9**

Champion Junior Exhibitor

Reserve Champion Junior Exhibitor

*PROUD SPONSORS*

- ❖ *Ace Hardware*
- ❖ *Whip 'N' to Wendy's*
- ❖ *Manderson Family*

**OVERALL CHAMPIONS**

**Champion Exhibition Pair**

**Champion Softfeather**

**Grand Champion Bird of Show**

**Grand Champion Waterfowl of Show**

**Champion Pair of Females**

**Champion Hardfeather**

**Reserve Champion Bird of Show**



[Back to Contents](#)



## **SECTION 5 – DOGS**

**SATURDAY 1 June 2019**

**(Affiliated with the Canine Control Council, Queensland)**

**STEWARD:** Jane Armatys      07 4157 2758  
(District Director for Australia of the Collie Club of America)

**VENUE:**      **Gin Gin Recreational Sports Grounds**  
Bruce Highway, northern outskirts of Gin Gin

Look for the signs!



**JUDGING:** To commence at 9:00 am

**Ring 1**      Group 1      Toys  
                 Group 4      Hounds  
                 Group 5      Working Dogs

**Ring 2**      Group 3      Gundogs  
                 Group 2      Terriers  
                 Group 6      Utility  
                 Group 7      Non-Sporting



[Back to Contents](#)



## **SECTION 6 - SUGAR CANE**

**STEWARDS:** Sam Eden: 0427 572 484  
Alan Stevens: 0427 987 179

**ENTRY FEE:** Sponsored by **Isis Central Sugar Mill, Qld Sugar Ltd & Canegrowers Isis Ltd**

**PRIZE MONEY:** 1<sup>st</sup> \$15, 2<sup>nd</sup> \$5 (Prizes can change due to sponsorship)

### **SPECIAL REGULATIONS:**

- ❖ All cane to be approved varieties and to be the property of the exhibitor who is a bona fide canegrower.
- ❖ **All exhibits in classes 5 to 30 can be delivered to the Showgrounds between 8am Friday 31 May & 10 am Saturday 1 June 2019**
- ❖ Classes 5 to 28 - any cane without the natural top will be excluded.
- ❖ A separate exhibit in each class unless otherwise specified.
- ❖ All exhibits must bear correct variety and age of cane on class ticket.
- ❖ Approved varieties: Q135, Q183, Q208, KQ228, Q232, Q238, Q240, Q242, Q245, Q252 plus any new varieties.
- ❖ No suckers on any exhibits.
- ❖ Where four sticks are insufficient for CCS testing, more will be required.
- ❖ **All cane for CCS classes to be delivered to show pavilion on Saturday 25 May 2019 between the hours of 8.30 am and 11.00 am.** Any cane in CCS classes topped below the growing point will not be eligible.
- ❖ Exhibits for classes 26 & 27 must be a single stick - no side shoots or suckers.

### **CCS CHAMPIONSHIPS** – each entry must consist of 4 sticks

1. Weight and CCS Champion - **CANEGROWERS TROPHY** and prize money donated by Bundaberg Canegrowers - 1<sup>st</sup> \$50, 2<sup>nd</sup> \$20, 3<sup>rd</sup> \$10
2. All approved varieties 12 months & under – 1<sup>st</sup> \$20, 2<sup>nd</sup> \$10, 3<sup>rd</sup> \$5
3. All approved varieties 12 months to 17 months -1<sup>st</sup> \$20, 2<sup>nd</sup> \$10, 3<sup>rd</sup> \$5
4. All approved varieties standover -1<sup>st</sup> 20, 2<sup>nd</sup> \$10, 3<sup>rd</sup> \$5

### **HIGHEST CCS**

**ERIC CAMPBELL MEMORIAL Trophy** + Sash donated by Hazle Marland OAM

### **General Exhibits**

- |                |  |
|----------------|--|
| 5. Q135 & Q232 | Best 4 sticks of Plant or Ratoon under 12 months |
| 6. Q183        | Best 4 sticks of Plant or Ratoon under 12 months |
| 7. Q208        | Best 4 sticks of Plant or Ratoon under 12 months |
| 8. KQ228       | Best 4 sticks of Plant or Ratoon under 12 months |
| 9. Q245        | Best 4 sticks of Plant or Ratoon under 12 months |
| 10. Q238       | Best 4 sticks of Plant or Ratoon under 12 months |
| 11. Q240       | Best 4 sticks of Plant or Ratoon under 12 months |
| 12. Q242       | Best 4 sticks of Plant or Ratoon under 12 months |
| 13. Q252       | Best 4 sticks of Plant or Ratoon under 12 months |

**ISIS MILL PERPETUAL TROPHY Best 4 sticks** Classes 5 –13 (No separate entry)

14. Q135, Q232 Best 4 sticks of Plant or Ratoon over 12 months & under 18 months
15. Q183 Best 4 sticks of Plant or Ratoon over 12 months & under 18 months
16. Q208 Best 4 sticks of Plant or Ratoon over 12 months & under 18 months
17. KQ228 Best 4 sticks of Plant or Ratoon over 12 months & under 18 months
18. Q245 Best 4 sticks of Plant or Ratoon over 12 months & under 18 months
19. Q238 Best 4 sticks of Plant or Ratoon over 12 months & under 18 months
20. Q240 Best 4 sticks of Plant or Ratoon over 12 months & under 18 months
21. Q242 Best 4 sticks of Plant or Ratoon over 12 months & under 18 months
22. Q252 Best 4 sticks of Plant or Ratoon over 12 months & under 18 months

**QLD SUGAR LTD** **Best 4 sticks** Classes 14 – 22 (no separate entry)  
1<sup>st</sup> \$50 + Sash, 2<sup>nd</sup> \$20, 3<sup>rd</sup> \$10

23. Standover-any variety
  24. Best stool under 12 months ~ 1<sup>st</sup> \$50, 2<sup>nd</sup> \$20
  25. Best stool over 12 months ~ 1<sup>st</sup> \$50, 2<sup>nd</sup> \$20
  26. Heaviest stick of cane
  27. Longest stick of cane
  28. Best Collection (four varieties only - two sticks of each variety)
- Sponsored by **QLD SUGAR LTD** 1<sup>st</sup> \$50 + sash, 2<sup>nd</sup> \$20, 3<sup>rd</sup> \$10

**CHAMPION STICK OF THE SHOW** (no separate entry)  
Sponsored by **QLD SUGAR LTD** + Sash + \$25

**CHAMPION FOUR STICKS OF SHOW** (no separate entry)  
Sponsored by **LANDMARK** + Sash + \$25

**CHAMPION STOOL OF SHOW**  
Sponsored by **FORMATT MACHINERY** \$100 + Sash

**POINTS PRIZE:** To be scored on a point basis of:  
4 points for 1<sup>st</sup>  
2 points for 2<sup>nd</sup>  
1 point for 3<sup>rd</sup>  
1 point per entry over all classes in Section 6  
**1<sup>st</sup> \$50, 2<sup>nd</sup> \$20, 3<sup>rd</sup> \$10** Sponsored by **CANEGROWERS ISIS LTD**

**All sashes are sponsored by Queensland Sugar Limited**

**JUDGES-** B Quinn, J Sullivan & assistant C Quinn



**PRESENTATIONS**  
**SUNDAY 2 June 2pm**  
**Cane Display Area**

**NB** All Cane exhibits must be destroyed at the conclusion of the show

#### *PROUD SPONSORS*

- ❖ *Bundaberg*
- ❖ *Canegrowers*
- ❖ *Canegrowers Isis*
- ❖ *Formatt Machinery*
- ❖ *Hazle Marland OAM*
- ❖ *Isis Central Mill*
- ❖ *Queensland Sugar Limited*
- ❖ *Landmark*



[Back to Contents](#)

## **SECTION 7 - FARM PRODUCE**

**STEWARD:** Graham Betts 0407 074 163  
**ENTRY FEE:** Free  
**PRIZE MONEY:** 1<sup>st</sup> \$5 2<sup>nd</sup> \$2 (Unless otherwise stated)

### **CONDITIONS:**

- ❖ **All entries to be in the Pavilion between 1 pm and 5 pm on Friday 31 May**
- ❖ Judging will be at 5:30 pm on **Friday 31 May, 2019**
- ❖ All exhibits shall become the property of the Society for sale or the exhibits may be retained by exhibitors by request to the Steward at the time of entry.

### **POTATOES**

1. Any white variety 1 kg
2. Any other variety 1 kg
3. Sweet Potatoes, table 2 kg
4. Best collection of potatoes, 2 kg of each variety



### **PUMPKINS**

5. Three Jap type Pumpkins
6. Three Queensland Blue Pumpkins
7. Three Pumpkins, any other variety
8. Three Jarrahdale Pumpkins
9. One large Pumpkin
10. Collection of Pumpkins, one of each variety
11. HEAVIEST PUMPKIN from classes 5 to 10  
Perpetual Trophy donated by Barry Johnson OAM
12. JUNIOR Under 16 – Heaviest Pumpkin  
Perpetual Trophy donated by Barry Johnson OAM
13. SCHOOL – Heaviest Pumpkin  
Perpetual Trophy donated by Barry Johnson OAM



*THANKS TO  
GIN GIN LANDCARE  
PAVILION SPONSORS*

### **VEGETABLES**

14. Sweet Corn, six cobs
15. Cabbage, two heads large
16. Cabbage, two heads small
17. Cherry Tomatoes, one punnet
18. Egg Tomatoes, six
19. Tomatoes, six
20. Turnips, Swede, four with tops
21. Carrots, six with tops
22. Radish, six with tops
23. Beetroot, three with tops
24. Lettuce, two large
25. Lettuce, two small
26. Herbs, collection fresh, minimum six varieties
27. Beans, green or butter, 40 pods
28. Beans, any other variety, 40 pods





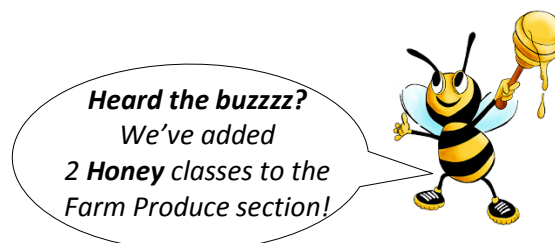
29. Peas, cow, not more than, 40 pods, dry, small
30. Peas, 40 pods
31. Snow Peas, 40 pods
32. Peanuts, half kg, in clear containers
33. Pecan nuts, half kg, in clear containers
34. Queensland nuts, half kg, in clear containers
35. Nuts, half kg, any other variety, in clear containers
36. Chillies, plate
37. Capsicums, three
38. Squashes, three
39. Chokos, three
40. Cucumbers, three long green or white
41. Cucumbers, three Lebanese
42. Cucumbers, three any other variety
43. Pine Melon, one
44. Shallots or Chives, one bundle
45. Garlic, 3 heads
46. Egg Fruit, two
47. Zucchini's, three
48. Vegetables, any other variety
49. Vegetables, collection, not less than ten varieties  
1st Trophy donated by G Finlay, 2nd \$5
50. Eggs, any variety, one dozen
51. **Honey – Liquid** – 250 -500gr bottle
52. **Honey – Chunk** - a jar of honey with a cut out section of comb 250-500gr bottle



- ❖ *Thank you to all those who enter their produce in the pavilion*
- ❖ *Thanks also to the families who provide sponsorship and continue to support the Gin Gin Show*
- ❖ *A great community effort!*

## FRUIT

53. Pineapples, smooth two
54. Pineapples, rough two
55. Oranges, six Navel
56. Oranges, six Valencia or Seville
57. Oranges, six any other variety
58. Grapefruit, five
59. Grapefruit, Pink five
60. Kumquats, one plate
61. Limes, six
62. Mandarins, Emperor, six
63. Mandarins, Imperial, six
64. Mandarins, any other variety, six
65. Lemons, Lisbon, six
66. Lemons, Bush, six
67. Lemons, any other variety, six
68. Lemonades, six
69. Custard Apples, three
70. Bananas, Lady Fingers, one hand
71. Bananas, Cavendish, one hand
72. Bananas, any other variety, one hand
73. Paw Paw, one
74. Rosellas, half kg in containers





- 75. Passionfruit, six
- 76. Monsterio, one
- 77. Dragon Fruit, any colour, three
- 78. Avocado, three rough
- 79. Avocado, three smooth
- 80. Any other varieties of fruit
- 81. Collection of fruit – 1<sup>st</sup> \$7, 2<sup>nd</sup> \$4
- 82. Collection of fruit and vegetables – 1<sup>st</sup> \$7, 2<sup>nd</sup> \$4
- 83. Collection of Citrus Fruit, minimum six varieties – 1<sup>st</sup> \$7, 2<sup>nd</sup> \$4

**FARMER'S HAT - Well-worn work hat**

- 84. Adult's Work Hat
- 85. Child's Work Hat



**JUNIOR ENTRIES** Classes 86 to 88 1<sup>st</sup> Prize donated by Anne Bradford

- 86. Vegetable Creation (Years 4 to 6)
- 87. Vegetable Creation (Years 1 to 3)
- 88. Vegetable Creation (Kindy & Prep)
- 89. **Best Handmade Honey Bee (any material)**  
1 entry per person, max length 50cm



**TROPHIES:**

❖ **MOST POINTS**

Donated by Gin Gin AP&I Society Inc  
3 points for 1<sup>st</sup> and 1 point for 2<sup>nd</sup>

❖ **CHAMPION FARM PRODUCE ENTRY**

❖ **CHAMPION FRUIT ENTRY**

Donated by the Flanders Family in memory of Mr RC Flanders

❖ **CHAMPION COLLECTION**



**Did you know...**

...bees and other  
pollinators make important  
contributions  
to agriculture.  
Pollinators affect 35  
percent of  
global agricultural land,  
supporting the production  
of 87 of the leading food  
crops worldwide



[Back to Contents](#)

## **SECTION 8 – OPEN BAKING**

**STEWARD:** Ellen Haydon

**ENTRY FEE:** 50 cents

**ENTRIES DELIVERED TO PAVILION:** Friday 31 May between 8am & 10am

**PRIZE MONEY:** 1<sup>st</sup> \$5, 2<sup>nd</sup> \$3 (unless otherwise stated)

**Don't forget – all  
judging on Friday**



### **SPECIAL REGULATIONS:**

- ❖ Please **read your schedule carefully** and make sure all your entries are in the correct class and your form is filled in correctly
- ❖ The judge's decision will be final and no conversation will be entered into
- ❖ Entries must be the work of the person on the entry form AND NO LATE ENTRIES will be accepted
- ❖ If you have registered your entry at the show office, make sure that the stewards have your entry form which is filled out and remember to tell the stewards if you have paid your fees
- ❖ Entries must be presented on a paper plate – no plastic plates please
- ❖ Packet mixes must not be used unless specified in the schedule
- ❖ Glace icing is to be used in all entries – no butter or cream cheese to be used in icing (exception is Carrot cake)
- ❖ Glad Bake only may be placed under **entries on paper plates** and no plastic wrap is to be used when presenting entries
- ❖ Loaf tins may be used in place of bar tins
- ❖ Stewards do not have any change so **please have the correct entry fees**
- ❖ If your entry is NOT for sale please make sure that it is MARKED CLEARLY ON BOTH PLATE AND ENTRY FORM
- ❖ If you do not collect your entry when the pavilion and the display is dismantled, your entry WILL BE SOLD AND THE PROCEEDS GO TO THE SHOW SOCIETY

The **Perpetual Trophy** will go to the overall winner in this section

**OPEN                    Most Number of Entries**

- ❖ Ribbon and Trophy donated by Nell Finlay

**OPEN                    Most Winning Points, 1<sup>st</sup> 3 points, 2<sup>nd</sup> 1 point**

- ❖ Ribbon and Trophy donated by Richard & Cath Manderson

**JUVENILE              Most Winning Points**

- ❖ Ribbon and \$50 presented in memory of Denny McQuillen

All entries and prizes to be collected from Section Steward, 2:30pm Sunday.

**Any items remaining will be auctioned off at 3.00pm,  
unless prior arrangements have been made**



1. Sponge Sandwich, filled only with strawberry or raspberry jam – no icing or icing sugar on top
2. Men's Butter Cake - Iced – 1<sup>st</sup> Trophy donated by Kerryn Flanders
3. Packet Cake - any variety - label to be under plate
4. Marble Cake – iced with pink icing
5. Rainbow Cake – 3 or more layers – max height 15cm  
1<sup>st</sup> Trophy donated by Ellen Haydon
6. Kentish Cake (with nuts, glace cherries chopped, coconut and sultanas) - bar tin
7. Rich Fruit Cake, 20cm ROUND tin  
1<sup>st</sup> Trophy donated by Kerryn Flanders - 2nd \$7 - 3rd \$4
8. Dark Rich Fruit Cake – see details in the box below



**ENTRY: \$1.50**

Own recipe can be used. Must be ½ lb (250gm) Mixture approx. 1.12kg of fruit, containing currents (whole), sultanas and raisins (cut), mixed peel, cherries, and nuts optional, to be baked in 20cm (8in) square tin

**FIRST PRIZE: 1<sup>st</sup> \$50, 2<sup>nd</sup> \$30, 3<sup>rd</sup> \$10** donated by Peter & Colleen Gorlick

**BURNETT SUBCHAMBER DARK RICH FRUIT CAKE COMPETITION**

*The winner is eligible to enter their cake in **the Burnett Subchamber Finals to be held in Monto on 6 July 2019***

9. Light Fruit Cake - 20cm round tin (375g Mixed Fruit)
10. Boiled Fruit Cake - 20cm round tin  
1<sup>st</sup> Trophy donated by Jan Tobin in memory of Joy Lewis
11. Steamed Plum Pudding – 1<sup>st</sup> Trophy donated by Peter & Colleen Gorlick
12. Plum Pudding (boiled in cloth) – 1<sup>st</sup> Trophy donated by Sharyn Finlay
13. Pumpkin Fruit Cake - round tin - 1<sup>st</sup> Trophy donated by Dianne Bailey
14. Sultana Cake (not butter cake with sultanas)  
1<sup>st</sup> Trophy donated by Marg Braund
15. Orange Cake – iced - bar tin
16. Carrot Cake – iced - bar or loaf tin (must contain walnuts & vegetable oil)  
1<sup>st</sup> Trophy donated by Dianne Bailey
17. Apple Tea Cake - sliced apple on top - round tin  
1<sup>st</sup> Trophy donated by Rita Maughan
18. Madeira Cake - bar or loaf tin  
1<sup>st</sup> Trophy donated in memory of Denny McQuillen
19. Date Loaf



20. Gingerbread - loaf tin
21. Banana Cake - loaf tin
22. Small Iced Novelty Cakes - plate of 4 decorated in **“When bees thrive, we all thrive”** theme - all ingredients must be edible
23. Patty Cakes – iced - plate of 6
24. Lamingtons - plate of 4 – 1<sup>st</sup> Trophy donated by Tina Stehbens
25. Muffins – sweet - not in paper - plate of 4 - 1<sup>st</sup> Trophy donated by Stacey Watson
26. Muffins – savoury - not in paper - plate of 4
27. Pikelets - plate of 6
28. Jam Drops - plate of 6
29. Gingernut biscuits - plate of 6
30. Selection of Mixed Biscuits – plate of 8 biscuits with 6 or more varieties
31. Anzac Biscuits - plate of 6
32. Shortbread - plate of 6 - 1<sup>st</sup> Trophy donated by John & Sharyn Finlay
33. Chocolate Slice – traditional – iced - plate of 6
34. Chocolate Brownies - plate of 6
35. Scones – traditional - plate of 6 - 1<sup>st</sup> Trophy donated by John & Sharyn Finlay
36. Pumpkin Scones - plate of 6
37. Loaf of Bread – 500 grams - machine made – 1<sup>st</sup> Trophy donated by Karen Holloway
38. Loaf of Bread – 500 grams – traditional method
39. Any other sweet Bun



**CHAMPION CAKE** from classes 1 to 21

❖ Trophy donated by Gin Gin QCWA + ribbon

**CHAMPION EXHIBIT** from classes 1 to 39

❖ Trophy donated by Jenny Tobin + ribbon

**JUDGE'S CHOICE** – Classes 1-39



**Did you know...**

...the average worker bee produces only about 1/12th teaspoon of honey in its lifetime.



[Back to Contents](#)



## **SECTION 9 - JUVENILE BAKING**

**STEWARD:** Jodie McCotter 0428 856 643

**ENTRIES DELIVERED TO PAVILION:** Friday 31 May between 8am & 10am

**ENTRY FEE:** 50 cents

**PRIZE MONEY:** 1<sup>st</sup> \$5      2<sup>nd</sup> \$3 (unless otherwise stated)

Competitor with most number of points wins Ribbon and \$50 donated by Stacey Watson, in memory of Denny McQuillen



### **Preschool – any child below school age**

1. Any item

### **JUVENILE up to 7 yrs**

2. Biscuits - chocolate chip - plate of 4
3. Decorated Milk Arrowroot Biscuits, **“When bees thrive, we all thrive”** theme and all must be edible - plate of 4 – 1<sup>st</sup> Trophy donated by ESA Gin Gin
4. Patty Cakes – iced - plate of 4 – 1<sup>st</sup> Trophy donated by Hayley Dwyer

### **JUVENILE 8 to 12 yrs**

5. Chocolate Slice – iced - plate of 4 – 1<sup>st</sup> Trophy donated by Hayley Dwyer
6. Jam Drops - plate of 4
7. Decorated Milk Arrowroot Biscuits - plate of 4 **“When bees thrive, we all thrive”** Theme – all ingredients must be edible
8. Patty Cakes – iced - plate of 4 – 1<sup>st</sup> Trophy donated by Hayley Dwyer
9. Large, Decorated Cake, “When Bees Thrive, We All Thrive” theme and all must be edible - judged on theme – 1<sup>st</sup> Trophy donated by Kerry Flanders
10. Pikelets - plate of 4

### **JUVENILE 13 to 17 yrs**

11. Scones - plate of 4 - 1<sup>st</sup> Trophy donated by Peter & Colleen Gorlick
12. Chocolate Slice – iced - plate of 4 – 1<sup>st</sup> Trophy donated by Wallaville QCWA
13. Jam Drops - plate of 4 - 1<sup>st</sup> Trophy donated by Wallaville QCWA
14. Large, Decorated Cake, “When bees thrive, we all thrive” Theme and all must be edible - judged on theme - 1<sup>st</sup> Trophy donated by Gin Gin QCWA
15. Orange Cake – iced - bar tin - 1<sup>st</sup> Trophy donated by Karen Finlay
16. Patty Cakes – iced – “When Bees Thrive, We All Thrive” Theme - plate of 4 1<sup>st</sup> Trophy donated by Hayley Dwyer
17. Any variety packet cake – iced
18. Muffins – sweet - plate of four - 1<sup>st</sup> Trophy donated by Shirley Baldwin
19. Pikelets - plate of 4 - 1<sup>st</sup> Trophy donated by Gin Gin QCWA
20. Fudge - any variety - plate of 4 – 1<sup>st</sup> Trophy donated by Wallaville CWA

**Juvenile Champion – from Classes 1 to 20 – Trophy and Ribbon**

[Back to Contents](#)

## **SECTION 10 – CONFECTIONERY, CAKE DECORATING & PRESERVES**

**STEWARD** Leigh Johnson 0427 574 025  
**ENTRY FEE:** 50 cents  
**PRIZE MONEY:** 1<sup>st</sup> \$5, 2<sup>nd</sup> \$3 (unless otherwise stated)  
**ENTRIES DELIVERED TO PAVILION:** Friday 31 May between 8am & 10am

### **CONFECTIONERY**

1. Coconut ice - pink and white - plate of 6
2. Russian Caramels - plate of 6
3. Marshmallows - plate of 6
4. Fudge – chocolate - plate of 6
5. Rocky Road - plate of 6
6. Mixed Sweets – plate of 4 or more varieties



### **CAKE DECORATING**

**ENTRY FEE:** \$1 except Wedding Cakes - \$2

### **CONDITIONS OF ENTRY:**

- ❖ Once in the hands of the stewards, exhibits must not be handled without the consent of the Steward
- ❖ No entry can be entered in more than one class
- ❖ There will be a limit of 1 entry per class per exhibitor
- ❖ All exhibits must be the bona fide work of the exhibitor
- ❖ Entries that require a baked cake can be fruit cake, butter cake, mud cake etc
- ❖ Judges have the right to pierce cakes for foreign matters
- ❖ Alternatives eg Styrofoam, cake tin etc will be accepted for classes that do not require a baked cake
- ❖ Use of manufactured pillars (including wine glasses), tulle, ribbon, cachous, stamens (manufactured or handmade), floral tape and fine wire may be used
- ❖ Use of dolls, toys or any glass; wooden, tin or other manufactured materials is not permitted to be used as decorations on the cake
- ❖ Non-sugar items eg artificial ornaments or flowers are not permitted
- ❖ Wire and tape in flower sprays may be used but must not penetrate the icing
- ❖ Edible gold & silver leaf, edible paints, shimmer lustre & glitter may be used. Please note that non-toxic does not necessarily mean edible
- ❖ Base boards can be wood, covered in fondant icing, paper, fabric or similar. Commercial drum cake boards or commercial Masonite boards are also recommended. These can be covered in fondant icing or left plain
- ❖ Base boards must have cleats (feet) underneath to raise them off the table to allow easier handling. Cleats will not be available at the Show
- ❖ The entire entry must fit within the perimeter of the base board - no part of the exhibit is to protrude past the board's edge
- ❖ No restrictions have been made regarding the size of the exhibit boards, but we ask competitors to be realistic & consider ease of handling & exhibiting in the display cases
- ❖ Cake coverings should be fondant, smooth and free of cracks or marks. Not all fondant brands are the same – some are better suited to hot, humid conditions
- ❖ Moulds & cutters may be used to assist in the making of iced decorations & accessories
- ❖ Failure to comply with any of these rules will result in disqualification

**HINTS & TIPS to help you!**

**Overall Design:** Colour, balance & harmony will create a pleasing visual impact – this should allow your exhibit to stand out from the others

**Techniques:** Well executed pipework & modelling will help you gain additional points.

Pipework should be completed with freshly made royal icing, be well formed & consistent in size & shape.

When modelling flowers & leaves, the fondant should be finely rolled out with no ragged edges; pieces should appear natural in shape & colour & veined if appropriate

Novelty figures should be free of cracks & lint with attention given to the joining of pieces

Care in attaching your decorations to the cake is important. Royal icing is a good, strong medium but any sign of attachment should be kept to a minimum

Cakes may be cooked & frozen then iced after removing from freezer



**OPEN**

7. **SPECIAL OCCASION CAKE** - Modern or Traditional - Single Tier Iced & decorated  
Judged on suitability for occasion eg birthday, engagement, Christening etc  
Prizes: 1<sup>st</sup> \$20      2<sup>nd</sup> \$ 15      3<sup>rd</sup> \$10      Donated by Rex Inskip
8. **WEDDING CAKE - Traditional** – 1 or more tiers – Iced & decorated **Entry Fee \$2**  
Arranged & presented on common baseboard  
*Note: Alternatives such as Styrofoam etc will be accepted*  
1<sup>st</sup> \$40      2<sup>nd</sup> \$ 25      3<sup>rd</sup> \$15 Donated by Sweet Lucy – Cake & Event Studio
9. **WEDDING CAKE - Modern** – 1 or more tiers – Iced & decorated **Entry Fee \$2**  
Arranged & presented on common baseboard  
*Note: Alternatives such as Styrofoam etc will be accepted*  
1<sup>st</sup> \$40      2<sup>nd</sup> \$ 25      3<sup>rd</sup> \$15 Donated by Sweet Lucy – Cake & Event Studio
10. **SUGAR CRAFT** – Floral Arrangement or novelty item on baseboard  
Prizes: 1<sup>st</sup> \$10      2<sup>nd</sup> \$ 5
11. **NOVELTY CAKE** – Iced & decorated  
Fruit cake, butter cake or mud cake may be used. Entry must be equivalent to a 16cm square cake. Can be more than 1 cake. Fancy shaped cake tin is allowed  
1<sup>st</sup> \$10      2<sup>nd</sup> \$ 5

**JUVENILE** - to 18 years

12. **DECORATED CAKE** – Single tier – Iced & decorated.  
Fruit cake, butter cake or mud cake may be used.  
1<sup>st</sup> \$10, 2<sup>nd</sup> \$ 5      Sponsored by Leigh Johnson

**NOVICE** - First time entered in Show or any exhibitor who

has not won a 1<sup>st</sup> prize in a Cake Decorating section at a previous Gin Gin Show

13. **DECORATED CAKE** – Single tier – Iced & decorated – excluding novelty  
Fruit cake, butter cake or mud cake may be used.  
*Note: Alternatives such as Styrofoam etc will be accepted*  
1<sup>st</sup> \$10, 2<sup>nd</sup> \$ 5      Sponsored by Leigh Johnson

**CHAMPION DECORATED CAKE** - Ribbon & Trophy

*PROUD SPONSORS*

- ❖ *Rex Inskip*
- ❖ *Sweet Lucy - Cake & Event Studio*
- ❖ *Leigh Johnson*





## **PRESERVES**

**Jam, Chutney, Jelly and Pickle - to be in 250g - 500g bottles**

### **JAM**

14. Dried Apricot Jam - one bottle - 1<sup>st</sup> Trophy donated by Corey & Jodie McQuillen
15. Rosella Jam - one bottle - 1<sup>st</sup> Trophy donated by Marg Braund
16. Tomato Jam - one bottle - 1<sup>st</sup> Trophy donated in memory of Denny McQuillen
17. Any other variety Sweet Jam - one bottle  
1<sup>st</sup> Trophy donated by Midge Chippendale
18. Most Unusual Jam - 1<sup>st</sup> Trophy donated by Gloria Searle

### **FRUIT BUTTER and JELLY**

19. Lemon Butter - one bottle - 1<sup>st</sup> Trophy donated by Evelyn Johnson
20. Any other Fruit Butter - one bottle - 1<sup>st</sup> Trophy donated by Stacey Watson
21. Jelly - one bottle any variety (please state variety)

### **MARMALADE**

22. Sweet Orange Marmalade - one bottle - 1<sup>st</sup> Trophy donated by Heather Kohring
23. Any other Marmalade - one bottle - 1<sup>st</sup> Trophy donated by Barbara Stevens

### **PICKLES, CHUTNEY and SAUCE**

24. Mustard Pickles - one bottle - 1<sup>st</sup> Trophy donated by Heather Kohring
25. Pickled vegetables - one bottle - 1<sup>st</sup> Trophy donated by Corey & Jodie McQuillen
26. Pickles, any variety - one bottle – 1<sup>st</sup> Trophy donated by Stacey Watson
27. Mango Chutney - one bottle –  
1<sup>st</sup> Trophy donated by Lindy Harris in memory of Bob Flanders
28. Tomato Relish - one bottle - 1<sup>st</sup> Trophy donated by Jamie Johnson
29. Chutney - any other variety - one bottle
30. Tomato Sauce - one bottle - 1<sup>st</sup> Trophy donated by Evelyn Johnson
31. Sauce - any variety - one bottle  
1<sup>st</sup> Trophy donated in memory of Denny McQuillen

### **CHAMPION PRESERVE – Ribbon & Trophy**

#### ***Did you know...***

... honey is the only food that includes all the substances  
necessary to sustain life



[Back to Contents](#)

## **SECTION 11 - FANCY WORK**

**STEWARD:** Marion Pape – 0418 780 722  
**ENTRY FEE:** 50 cents per article  
**PRIZE MONEY:** 1st \$5, 2nd \$3 (unless otherwise stated)

**Perpetual Trophy** for exhibitor obtaining the most points in this section

### **SPECIAL CONDITIONS:**

- ❖ Open to all residents of Wide Bay and Burnett Districts only
- ❖ **All entries must be in the hands of Steward by 5.00pm Thursday for judging on Friday.** Entries may be left at Secretary's Office prior to the show
- ❖ All quilts must be ready to hang – no pins in hanging tabs
- ❖ Names on quilts must be covered
- ❖ All exhibits must have been completed within the last 3 years
- ❖ Exhibits which have won first prize at a previous Gin Gin show are not eligible
- ❖ It would be to the exhibitors' advantage if all Crochet work was displayed on cardboard
- ❖ Soiled work will not be judged
- ❖ An exhibit in the wrong class may be transferred to the appropriate class by the Steward at the discretion of the Judge or Judges
- ❖ An article means one piece

Entries & prize money to be collected from the Section Steward at **3.00 pm on Sunday**

### **CLASSES:**

#### **HANDCRAFT EMBROIDERY**

1. Hardanger - one piece
2. Huckaback – one piece
3. Swedish Darning
4. Guipure Lace Net Darning
5. Florentine – one piece
6. Pattern Darning - one piece
7. Table Centre or Table Cloth Embroidery
8. Candlewicking - one piece
9. Macrame Lace – one piece
10. Any other article not specified

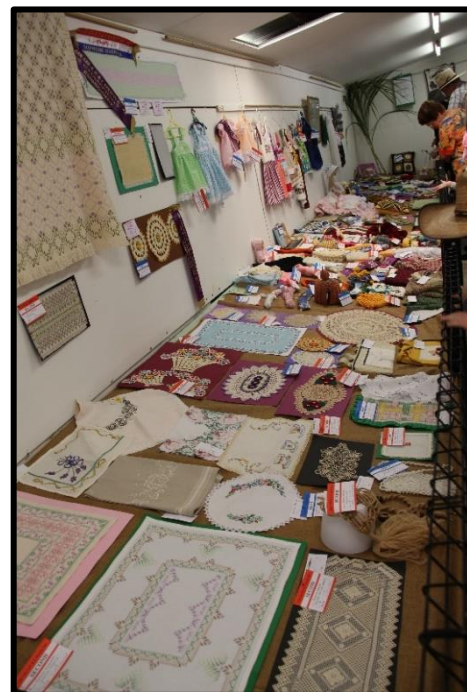
#### **CROCHET**

11. Duchess Set - No 20 cotton
12. Table Centre - No 20 or less cotton
13. Table Runner - No 20 or less cotton - 1<sup>st</sup> – Spotlight Voucher donated by Beattie Cooke
14. Doileys - No 20 or less cotton - approx 20 cm
15. Doileys - No 20 or less cotton - approx 50 cm

### *THANK YOU!*

- ❖ *We wish to thank the many local families and businesses who provide sponsorship.*
- ❖ *We appreciate your continued support of the pavilion entries in the Gin Gin Show*

16. Doileys - No 30 or over cotton - approx 20 cm
17. Doileys - No 30 or over cotton - approx 50cm
18. Filet Crochet – 1 piece
19. Handkerchief with crocheted corner
20. Piece of Crochet -Any Article - Novice
21. Rug - 1st \$30, 2nd \$20  
Donated by the Pohlman family in memory of Des Pohlman
22. Hanger
23. Article incorporating beads
24. Tea Cosy
25. Crochet Toy
26. Scarf
27. Novelty Item
28. Any other article not specified



## **HAND KNITTING**

29. Pullover or Cardigan - 1<sup>st</sup> Trophy donated by Anne Bradford
30. Baby's Booties
31. Scarf
32. Hanger - trimmings permitted
33. Tea Cosy
34. Novelty Tea Cosy
35. Knitted Toy
36. Any other article not specified (wool, cotton or acrylic)



## **SEWING**

37. Child's Cotton Frock
38. Child's most attractive Frock – 1<sup>st</sup> \$10 donated by Glennis Goodman
39. Any Item - Novice
40. Apron
41. Decorated Coat Hanger
42. Hand needle Embroidery Article (e.g. Sashiko or Stitchery)
43. Appliqué Article (not specified) - 1<sup>st</sup> \$10 donated by Glennis Goodman
44. Patchwork Article (not specified)
45. Table Runner





## QUILTING

### QUILTS ACROSS QUEENSLAND

- ❖ The Champion Quilt from classes 46 to 48 will be eligible to compete in the Quilts across Queensland competition at the Royal Queensland Show in August
- ❖ Quilts must be ready to hang – no pins in hanging tabs
- ❖ All entries must be in the hands of the steward by 5.00pm Thursday

**ENTRY FEE:**     **\$1 per article**

**PRIZE:**             1<sup>st</sup> Sponsored Voucher – 2<sup>nd</sup> \$5

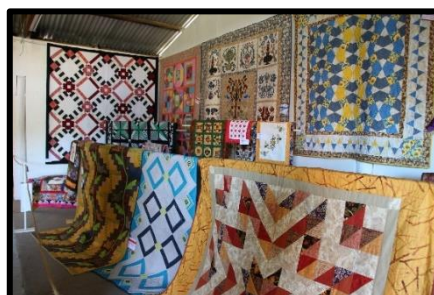
46.     Pieced Quilt - predominantly pieced. Hand or machine piecing & quilting - also includes crazy quilts (outer perimeter greater than 500cm)  
         1<sup>st</sup> Spotlight Voucher donated by Krazy Krafters, Gin Gin
47.     Quilt – Appliqued or other technique (outer perimeter greater than 500cm)  
         1<sup>st</sup> Voucher donated by Glennis Goodman
48.     Small Quilt – any technique (maximum outer perimeter 500cm)  
         1<sup>st</sup> Voucher donated by Marion Pape

(Outer perimeter is the total measurement of the outside edge of the quilt)



*Gin Gin's 2018 entry "The Lighthorseman" by Jacque Eden went on to take out 3<sup>rd</sup> place at the Ekka*

49.     Machine embroidered Table Topper/Runner  
         1<sup>st</sup> Spotlight voucher donated by Marion Pape
50.     Quilt – Any size – must be quilted by owner on a domestic machine  
         Trophy donated by Mrs Evelyn Johnson
51.     Quilt – Any size professionally quilted
52.     Machine Embroidered Quilt – 1<sup>st</sup> Spotlight voucher donated by Marion Pape
53.     Quilted Wall Hanging (minimum 50cm x 70cm, maximum 60cm x 90cm)
54.     Cot Quilt - **Bee theme** - any technique (maximum size 70cm x 130cm)



## MISCELLANEOUS

55. Cushion Cover, any medium
56. Soft Toy
57. Teddy Bear- jointed
58. Best Dressed Newborn Doll – 1<sup>st</sup> Trophy donated by Anne Bradford
59. Best Dressed Bridal Doll
60. Piece of Cross Stitch - mounted - 1<sup>st</sup> \$10 donated in memory of Carol Inskip
61. Latchhook
62. Looming or Weaving
63. Novelty Hand Towel
64. Rag Rug – handmade
65. Any other article - not specified
66. Item made from recycled material
67. Bag – any medium
68. Item made from Hessian
69. Fascinator



## JUVENILE - UNDER 18 YEARS

70. Item made from Recycled material
71. Knitted Scarf
72. Hand Embroidered Hand Towel
73. Novelty Article
74. Any other article

## PRIMARY SCHOOL STUDENTS

75. Hand Embroidered Hand Towel
76. **Honey Bee** – made using acrylic or wool yarn – embellishments & pipe cleaners may be added
77. Novelty Article



## CHAMPIONSHIPS

### CHAMPION PIECE OF EMBROIDERY

- ❖ Spotlight Trophy donated by Beatie Cooke

### CHAMPION ENTRY IN KNITTING

- ❖ Trophy donated by Anne Bradford

### CHAMPION ENTRY IN CROCHET

- ❖ Trophy donated by Rex Inskip in memory of Carol Inskip

### CHAMPION ENTRY IN SEWING SECTION

- ❖ \$15 Open Order donated by Corbett and Sons

### CHAMPION QUILT

- ❖ Perpetual Shield donated by Barry & Evelyn Johnson + \$15 Open Order donated by Corbett and Sons

### CHAMPION OVERALL

- ❖ Trophy donated by Anne Bradford

## **SECTION 12 - FINE ARTS**

<b>STEWARD:</b>	Sue Robinson	0429 789 266
<b>ENTRIES CLOSE:</b>	Thursday 30 May 2019 at 5 pm	
<b>ENTRY FEE:</b>	Open \$5, Pensioners \$3, Juveniles \$2	
<b>PRIZE:</b>	1 <sup>st</sup> \$50 - 2 <sup>nd</sup> \$20 - 3 <sup>rd</sup> \$10 (Class 1 – 5)	
<b>Perpetual Trophy:</b>	Exhibitor obtaining most points	
<b>Show Champion:</b>	Judged on <b>All</b> entries (Class 1 – 10) - \$100	
<b>Reserve Champion:</b>	\$25	
<b>Juvenile</b> (Class 6 – 9)	1 <sup>st</sup> - \$15, Tutor voucher 2 <sup>nd</sup> - \$10, Tutor voucher 3 <sup>rd</sup> - \$5, Tutor voucher	
<b>Juvenile</b> (Class 10)	Art materials	
<b>Encouragement Award</b>	– Trophy by Mount Perry Fine Arts Group	

### **SPECIAL CONDITIONS:**

- ❖ Each entry must be marked on the back with exhibitor's name & title of painting.
- ❖ o entry larger than 60cm x 60cm
- ❖ Exhibits must not have been previously shown at the Gin Gin Show
- ❖ Exhibit to be original work of exhibitor
- ❖ Junior Classes must include age on back of exhibit
- ❖ All work will not be accepted unless able to be hung safely ie. board backing

### **CLASSES**

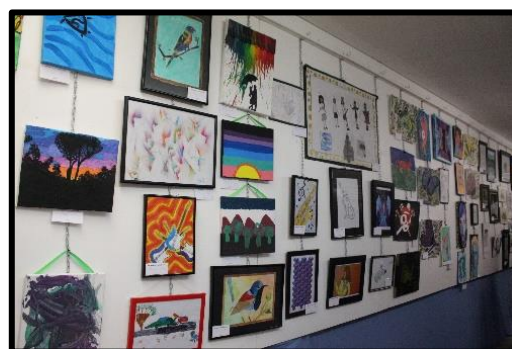
#### **OPEN – Displayed in the Buggy Shed next to Pavilion**

1. Traditional Subject (Any Medium)
2. Portrait – Still Life (Any Medium)
3. Contemporary and or Abstract (Any Medium)
4. Black & White and Monochrome (Any Medium)
5. Novice (Any Medium, Subject) Must not have won prize in open section previously at any show



#### **JUVENILE – Displayed in the Pavilion**

6. High School (15 to 18 yrs) (Any medium)
7. High School (12 – 15yrs) (Any medium)
8. Primary School (10yrs & over) (Any medium)
9. Primary School (5 – 9yrs) (Any medium)
10. Pre School (under 5) (Any medium)



[Back to Contents](#)



## **SECTION 13 - CRAFT**

**STEWARD:** Lyn Engstrom 41572496 or 0428 328 544  
**ENTRY FEE:** Open: - \$1.00, Juvenile: - 50cents  
**ENTRIES CLOSE:** 4 pm Thursday 30 May 2019  
**PRIZE MONEY:** Open: - 1<sup>st</sup> \$10 – 2<sup>nd</sup> \$5 – 3<sup>rd</sup> \$2.50  
Juvenile: – 1<sup>st</sup> \$4 – 2<sup>nd</sup> \$3 – 3<sup>rd</sup> \$2

- ❖ All entries to be collected from Steward after 3 pm Sunday
- ❖ All exhibits must be the bona fide work of the exhibitor
- ❖ Each & every exhibit must not have won a prize at a previous Show

### **CLASSES:**

#### **LATCHHOOK**

1. Any Article in Latchhook



#### **WOODTURNING**

2. LAMINATED ITEM – A turned laminated/segmented item
3. LIDDED CONTAINER – A turned lidded container. Threaded lid permitted. Any wood. Any clear finish. To be finished inside & out
4. PLATE, PLATTER OR BOWL – A turned plate, platter or bowl, machined all over from a single piece of wood. Any clear finish
5. ANY TURNED ITEM – Wood must be the predominant visible material. Any clear finish
6. NOVICE – A turned item from any wood. Any clear finish. Novice class is restricted to persons who have less than 2 years experience and has never won a first, second or third prize in any woodturning competition

#### **WOODWORK**

7. WOODEN ITEM/BANDSAW BOX – Single item featuring artistic design crafted using woodworking tools. Maximum size to occupy no more than 0.25m<sup>2</sup> of floor space & height of 500mm. Material is to be mainly wood with clear finish
8. TRINKET BOX/CHEST – A box/chest handcrafted from wood. Maximum size to occupy no more than 0.5m<sup>2</sup> of floor space & height of 500mm. To be mainly wood but may incorporate other materials. Any clear or stain finish
9. ANY OTHER ITEM INCLUDING FURNITURE – A single item of woodwork, indoor or outdoor. To be mainly wood but may incorporate other materials. Any clear or stain finish
10. PYROGRAPHY – An article featuring pyrography. Maximum size 1m x 500mm x 500mm on wood or wood product. Clear finish only
11. PYROGRAPHY – An article featuring pyrography. Maximum size 1m x 500mm x 500mm on wood or wood product. With painted finish only



12. SCROLL SAW WORK / INTARSIA – A scroll sawn item no larger than 1 m x 500mm x 500mm. Any wood or wood product. Any clear finish
13. SCROLL SAW WORK / INTARSIA – A scroll sawn item to fit into a space no larger than 1m x 500mm x 500mm. Any wood or wood product. With a painted finish
14. TOYS / MODELS – Hand crafted. Maximum size to occupy no more than 0.5m<sup>2</sup> of floor space & height of 500mm. Wood must be the predominant material. Any clear finish
15. TOYS / MODELS - Hand crafted. Maximum size to occupy no more than 0.5m<sup>2</sup> of floor space & height of 500mm. Wood must be the predominant material. Painted finish
16. CARVING – A carved wooden item. Maximum size to occupy no more than 0.5m<sup>2</sup> of floor space and height of 1m. Any clear finish
17. SCHOOL STUDENT – Any woodwork item. Maximum size to occupy no more than 0.5m<sup>2</sup> of floor space and height of 1m. Item to be mainly of wood or wood product, but may incorporate other materials. Wood must be the predominant visible material
18. NOVICE – Any woodwork item. Any clear finish. Novice class is restricted to persons who have less than two years experience in woodwork and has never won a 1<sup>st</sup>, 2<sup>nd</sup> or 3<sup>rd</sup> prize in any woodwork competition.



### **FABRIC PAINTING**

19. Painted Appliqué Garment or Item - Open
20. Tubed or Brush painted Garment or Item - Open
21. Garment or Item featuring Stencilled Design – Open
22. Hand dyed or coloured fabric featuring any technique/design. No larger than 25cm. Please pin a small sample of the original fabric to the dyed entry
23. Any Garment or Item under 9 years
24. Any Garment or Item 9-12 years
25. Any Garment or Item 13-17 years

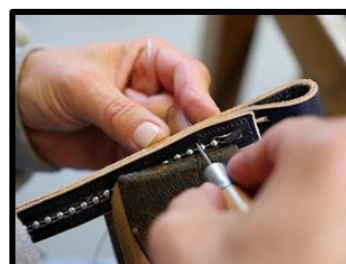


### **CREATIVE / NOVELTY WORK OF ART**

26. Creative / Novelty Work of Art – Open
27. Creative / Novelty Work of Art, any medium – under 9 years
28. Creative / Novelty Work of Art, any medium – 9-12 years
29. Creative / Novelty Work of Art, any medium – 13 -17 years

### **METAL ARTICLE** (judged on metal craftsmanship)

30. HOUSEHOLD ITEM – predominantly made from metal. Maximum size to occupy no more than 0.5m<sup>2</sup> floor space and height 1m
31. Item made from recycled or repurposed metal. Maximum size to occupy no more than 0.5m<sup>2</sup> floor space and height 1m
32. School Student – any item



### **LEATHER ARTICLE**

33. Hand Carved Leather Handbag - Open
34. Hand Carved Leather Wallet or belt - Open
35. Any Other Handmade Leather Article - Open
36. Any Handmade Leather Article, Juvenile under 18 years

## **DECORATIVE PAINTING**

- 37. Wall Hanging – Open. Item must have hardware allowing it to be hung
- 38. Household Article – Open
- 39. Glassware – Open
- 40. Chinaware – Open
- 41. Novice Section – Senior - Any item featuring decorative/folk art painting. Entrants must not have won 1<sup>st</sup>, 2<sup>nd</sup> or 3<sup>rd</sup> prize for decorative painting
- 42. Any item – Juvenile under 18 years

## **PAPER TOLE**

- 43. Wall Hanging – Open. Item must have hardware allowing it to be hung
- 44. Greeting Card – Open
- 45. Any item – Juvenile under 18 years

## **GREETING CARDS**

- 46. Hand Painted
- 47. Handmade card featuring stitchery
- 48. Handmade Card featuring other techniques eg. stamping, embossing, punches etc.
- 49. Handmade Card – Juvenile under 18 years

## **LEADLIGHTING**

- 50. Household Article – Open

## **JEWELLERY**

- 51. Necklace featuring beading
- 52. Bracelet featuring beading
- 53. A set of earrings – any medium
- 54. Silver Smithed piece of jewellery
- 55. A piece of jewellery – any other medium
- 56. Set of jewellery – must include a matching necklace, bracelet & earrings
- 57. Any medium – Juvenile under 18 years

## **CHAMPION CRAFT EXHIBIT – OPEN**

## **CHAMPION CRAFT EXHIBIT – JUVENILE**

## **CHAMPION WOODWORK – OPEN**

## **CHAMPION WOODWORK – JUVENILE**

**PERPETUAL TROPHY** – Exhibitor obtaining the most points in this Section

***Trophies donated by Possum Hollow Craft Cottage  
in Memory of Doug Flanders***



[Back to Contents](#)



## SECTION 14 - PHOTOGRAPHY

**STEWARD:** Connie Dyke 0437 011 677  
**ENTRY FEE:** 50 cents  
**PRIZE MONEY:** 1st – \$5, 2nd \$3, 3rd \$2  
**CLOSING DATE:** 3pm Tuesday 28 May with the Show Secretary  
**TROPHIES:** **Champion Photo of the Show**  
**Perpetual Trophy** – Most points in this Section

*Class 14 – Themed entry is  
open to any postcode*



### SPECIAL CONDITIONS:

- Entrant must reside within the 4671 postcode area **except for Class 14 – themed photo**
- Images MUST be photographed by the exhibitor
- Images exhibited in prior shows not eligible
- Photos to be 100mm x 150mm
- Photos should be mounted on black cardstock – 10mm border on each side
- Maximum 2 entries per person per class

### PROUD SPONSORS

- ❖ Eric & Connie Dyke
- ❖ Sam & Jacque Eden

### CLASSES:

#### Black & White

1. Portrait – single or group sitting
2. Texture – eg. bark, peeling paint, fence post etc.

#### Colour

3. Landscape
4. Sunset
5. Reflections – natural or manmade
6. In the Wild – nature shot – not domestic or caged creature
7. Bloomin' Beautiful – whole image of a flower, fungi, algae etc.
8. On the Land – features work life on the land – mustering, ploughing, picking etc.
9. Kids being Kids
10. Freeze the Action – any colour photo portraying action/speed
11. Macro/Close up – small section of an object showing maximum detail



**Theme - "When bees thrive, we all thrive"** - any aspect of the life of a honey bee

12. Primary School age student
13. High School age student
14. OPEN – any age, **any postcode**

**My Pet** – domestic animal, bird, fish, lizard etc.

15. Taken by Primary School age student
16. Taken by High School age student



### ENCOURAGEMENT AWARD IN JUVENILE SECTION

[Back to Contents](#)

## **SECTION 15 - SCRAPBOOKING**

**STEWARD:** Monique Armstrong – 41574191  
wjmarmstrong@hotmail.com.au

**ENTRY FEE:** 50 cents per page

**PRIZE MONEY:** 1<sup>st</sup> \$5, 2<sup>nd</sup> \$3, 3<sup>rd</sup> \$1

**ENTRIES CLOSE:** 3.30 pm Friday – 31 May 2019

- ❖ Scrap-booking is the art of preserving photographs and memories for future generations - the photos tell the story
- ❖ Pages should contain photographs, title, journaling and be inside a page protector
- ❖ Judges will be looking for the story in the page

### **TRADITIONAL SCRAPBOOKING**

#### **ADULTS**

1. **Honey Bees** – max. 3 photos 12" Single Page  
(any aspect of their life)
2. Dad 12" Single Page
3. What I like to do to relax 12" Double Page  
(must be incorporated into heading or journaling)

#### **HIGH SCHOOL**

4. Chillin' 12" Single Page.

#### **Did you know...**

...the queen bee can  
live up to 5 years and  
her role is to fill the  
hive with eggs



#### **PROUD SPONSORS**

- ❖ *Country Cottage Fabric & Craft*
- ❖ *Scrap Addiction*

### **DIGITAL SCRAPBOOKING**

The art of scrapbooking using a computer  
(to be printed on A4 card)

5. Adult: Your Choice A4 card
6. Juvenile: Your Choice A4 card

### **CHAMPION EXHIBIT**

### **ENCOURAGEMENT AWARD**

### **MOST NUMBERS OF EXHIBITS**



**Entries can be collected from Pavilion at 3.00pm unless prior arrangements have been made**

[Back to Contents](#)

## **SECTION 16 - PLANTS and FLOWERS**

**STEWARDS:** Jan Scott 0403 665 755 & Allison Scott 0403 665 754  
**ENTRY FEE:** 50 cents (Classes 1 – 48 FREE)  
**PRIZE MONEY:** 1<sup>st</sup> \$3 – 2<sup>nd</sup> \$1.50 (Unless otherwise stated)

### **SPECIAL CONDITIONS:**

- **All entries to be in between 1.00 pm and 5.00 pm on Friday 31 May 2019**
- All entry forms and accompanying fees to be paid to the Steward
- All exhibit cards to be tied to exhibits
- In the event of a tie, the prize money will be split
- Prize money to be collected from pavilion at 3.30 pm on Sunday

**CHAMPION FLOWERING POT** – Donated by Gin Gin Garden Club

**CHAMPION GERBERA** - Donated by Gloria Larsen

**CHAMPION FLOWERING ORCHID**

Donated by Bill & Sue Roffey in memory of Dudley & Nita Roffey

**CHAMPION POTTED PLANT** (except orchids) - Trophy donated by Starburst Diner

**CHAMPION ROSE OF SHOW** – Trophy

**CHAMPION HIBISCUS** - Trophy donated by Dave and Jan Scott

**CHAMPION CUT FLOWER** (other than previously specified)

Trophy donated by Gin Gin Village Motel

**CHAMPION HANGING BASKET** – Trophy by Yvonne Collier

**CHAMPION EXHIBIT IN FLORAL ART WORK**

Ivy Jensen Memorial Trophy Donated by Amber & Ron Larsen and Family

**MOST POINTS** – Perpetual Trophy

### **ROSES**

Cut flowers become the property of the Society

1. One Red Rose
2. Three Red Roses
3. One White Rose
4. Three White Roses
5. One Pink Rose
6. Three Pink Roses
7. One Yellow Rose
8. Three Yellow Roses
9. One Apricot or Bronze Rose
10. Three apricot or 3 Bronze Roses
11. Six Roses, each of a distinct variety
12. Container of Miniature Roses
13. Container of Roses, one colour, not necessarily one variety
14. One Truss of Polyantha Rose
15. Three Roses, bud to full bloom- 1 cultivator (1 variety)
16. One Rose, full bloom
17. Three full bloom
18. One Bi-colour or fancy Shade Rose



### **Did you know...**

...a hive of bees will fly 90,000 miles,  
the equivalent of three orbits around  
the earth to collect 1 kg of honey

19. Three Bi-Colour or fancy Shade Roses
20. One Rosebud, any colour
21. Container of Roses, mixed colours

### **CUT FLOWERS**

22. Six Stems of Sweet Peas, any colour
23. Calendulas, orange shades, three
24. Calendulas, yellow shades, three
25. Gerbera, semi double, one
26. Gerbera, semi double, collection
27. Gerbera, double, one
28. Gerbera, double, three
29. Gerbera, single, three, any colours
30. Gerbera, single, six, any colours
31. Gerbera, double, collection
32. Gerbera, AOV, one
33. Marigolds, collection
34. Nasturtiums, collection
35. Hibiscus, three, different colours
36. Hibiscus, single
37. Hibiscus, double
38. One Flowering Shrub, one stem only
39. Pansy 3 or more stems
40. Geraniums or Ivy Geranium any colour
41. Coleus, three distinct varieties
42. Chrysanthemum, in container
43. One Stem AOV Cut Flower
44. Three Stems of AOV Cut Flowers
45. Container of Mixed Flowers
46. Any Native Flowers
47. Crucifix Orchid, any colour, two or more stems
48. Any Other Orchid, including natives

### **POTTED PLANTS**

**Entry Fee for following classes – 50 cents**

**Prize Money – 1<sup>st</sup> \$5 - 2<sup>nd</sup> \$3**

*All entries to be in the hands of the Steward between 1.00 pm and 5.00 pm on Friday 31 May 2019*

49. One Peperomia in Pot - 1st Trophy donated by John Finlay
50. Flowering Pot Plant, one or more plants, same colour, same variety
51. African Violet or Cyclamen or Begonia in flower
52. One Fern
53. Collection of Ferns, two distinct varieties
54. Best Foliage in Pot
55. Fern in Hanging Container, one variety
56. Foliage in Hanging Container, one variety
57. Single or Multiple Flowering Hanging Container, one variety, one colour
58. Best Begonia in Pot or Hanging Basket



### **Did you know...**

...the contribution of honey bees to agriculture through pollination services is estimated to be valued at around \$19 billion in Australia in 2017





- 59. Best Cactus
- 60. Mini Garden Cactus, no less than three varieties
- 61. Mini Garden Succulent, no less than three varieties
- 62. Potted Bonsai
- 63. Potted Desert Rose
- 64. Potted Bromeliads
- 65. Pot Plant, any other variety
- 66. Juvenile (Under 18) - Child's Pot Plant, accessories included
- 67. Best succulent

### **ORCHIDS**

- 68. Orchid, novelty cattleya
- 69. Orchid, cattleya
- 70. Orchid, phalaenopsis or vanda
- 71. Dendrobium
- 72. Orchid, any other variety

### **FLORAL ART**

- 73. Tropical Splendour
- 74. Basic Modern
- 75. Beautiful Flowers & Bark
- 76. Foliage
- 77. Dried Arrangement
- 78. You are my Sunshine (Silk)
- 79. Rustic Treasures
- 80. Making the most of 1 Bloom
- 81. Split Level Design
- 82. Shoulder or Wrist Corsage



**NOVICE** – A person who has not won 1<sup>st</sup> prize in the Gin Gin Show

- 83. Arrangement of own choice

### **JUVENILE – to 18 years**

- 84. Buttonhole for a Man or shoulder Corsage or Wrist Corsage for Lady

### **PRIMARY SCHOOL STUDENT**

- 85. Decorative Saucer

**ALL WORK TO BE MADE BY THE EXHIBITOR**



[Back to Contents](#)

## **DON DINGLE MEMORIAL**

The 2019 Gin Gin Show will mark 10 years since the passing of local axeman Don Dingle.

In recognition of Don's considerable contribution to woodchopping at the Gin Gin Show, the woodchop area will be officially named the "Don Dingle Arena".

Don was passionate about woodchopping and competed for over 50 years without a break – an outstanding achievement.

He competed in all the Royal Shows and was very popular with the other axeman and loved catching up with them each year. He also travelled to America in 1981 to compete in woodchop events for a month.



*Photo: Wanganui Chronicle*

The Dingles are well-known around Australia for their chopping prowess as brothers, sons and nephews competed together as the Dingle Team to take on the rest.

In Don's eyes, his greatest achievement was being selected to compete in the

Australian Veterans Team against New Zealand – a feat he managed 9 times. Others may consider his fostering of the sport to be an even greater achievement.

Don enjoyed competing against his family and it was a delight to see the friendly rivalry and banter between them. Picking up axes at a very young age, Don

delighted in watching the next generation develop into fine axemen carrying on the family tradition.



The Management Committee and Members of the Show Society wish to pay our respect to Marlene, Tony, Kathy, Carol, Robyn, Rodney, Sue and their families, and thank you sincerely for continuing to support the woodchop at the Gin Gin Show.

## **SECTION 17 - WOODCHOPPING**

**SUNDAY 2 JUNE 2019**

**CHOPPING STARTS AT 9.30 AM**

**STEWARD: Cameron Wesche – 0408 720 535**

### **REGULATIONS:**

- Entries to be completed on entry form and forwarded to Allan Draper, PO Box 1160, Woodford Qld 4514, Phone 07 5496 3241, before **Friday 17 May 2019**. NO LATE ENTRIES
- These competitions will be conducted under the rules and regulations of the Qld Axemen's Assn and the Gin Gin AP and I Society Inc. The Society reserves the right to alter any event without notice
- All competitors must be registered financial members of the Qld Axemen's Assn or approved Axemen's Assn

<b>EVENT</b>	<b>ENTRY FEE</b>
1 300 mm Underhand Handicap 1st \$110, 2nd \$60, 3rd \$30 <b>Sponsored Stephen Bennett MP</b>	\$12
2 250 mm Standing Block Handicap 1st \$110, 2nd \$60, 3rd \$30 <b>Sponsored by Bendigo Bank</b>	\$12
3 275 mm Underhand Handicap 1st \$110, 2nd \$60, 3rd \$30 <b>Sponsored by Bendigo Bank</b>	\$12
4 Don Dingle Memorial 300 mm Standing Block Handicap 1st \$120, 2nd \$70, 3rd \$40, 4 th \$20, 5 <sup>th</sup> \$10, 6th \$10 <b>Sponsored by R J Dingle</b>	\$12
5 Combination Relay 250 mm Standing Block / 275 mm Underhand 1st \$110+Voucher, 2nd \$60+Voucher, 3rd \$30+Voucher	\$12/PP
6 A Division Championship - 300 mm Standing Block 1st \$110, 2nd \$60, 3rd \$30 <b>Sponsored by Boundary Gully Timber &amp; Transport &amp; Bendigo Bank</b>	\$12
7 B Division Championship - 275 mm Standing Block 1st \$110, 2nd \$60, 3rd \$30 <b>Sponsored by Boundary Gully Timber &amp; Transport &amp; Bendigo Bank</b>	\$12
8 C Division Championship - 250 mm Standing Block 1st \$110, 2nd \$60, 3rd \$30 <b>Sponsored by Boundary Gully Timber &amp; Transport &amp; Bendigo Bank</b>	\$12

- 9 275 mm Veteran's Underhand Handicap \$12  
1st \$110, 2nd \$60, 3rd \$30 **Sponsored by Gin Gin Lions Club**
- 10 Novice Handicap - 250 mm Underhand \$7  
1st \$50, 2nd \$30, 3rd \$20 **Sponsored by Brian & Jan Tobin**
- 11 Boy's Chop - 200 mm Underhand Handicap Free  
1st \$50, 2nd \$30, 3rd \$20  
**Sponsored by Cameron & Annette Wesche**
- 12 300mm Hard Hitting Standing Block \$12  
1 st \$110, 2 nd \$60, 3 rd \$30 **Sponsored Stephen Bennett MP**
- 13 250 mm Veteran's Standing Block Handicap  
1 st \$110, 2 nd \$60, 3 rd \$30  
**Sponsored by Ace Grinding & Saw Service** \$12

**Points Trophy donated by Blackwoods Bundaberg.**



### PROUD SPONSORS

- |                         |                                     |                      |
|-------------------------|-------------------------------------|----------------------|
| ❖ Bendigo Bank          | ❖ Boundary Gully Timber & Transport | ❖ Gin Gin Lions Club |
| ❖ Bruce & Liz Walker    | ❖ Ace Grinding & Saw Service        | ❖ P & A Dingle       |
| ❖ Paul & Jane Stehbens  | ❖ Stephen Bennett MP                | ❖ R J Dingle         |
| ❖ Blackwood's Bundaberg | ❖ Cameron & Annette Wesche          | ❖ Brian & Jan Tobin  |



## **SECTION 18 – STATE UTE MUSTER**

**SUNDAY 2 June 2019 9.00AM**

**STEWARD:** Jo Macdonald 0407 582 362

### **The competition aims to:**

- ❖ Offer an event which is not only a competition but also an attraction for our local show
- ❖ Provide a venue to showcase the effort and enthusiasm of the Ute owner
- ❖ Raise interest in the community
- ❖ Promote a link between city and country
- ❖ Provide a competition which has no restrictions on the owner's address

### **CLASSES:**

1. Street Ute
2. Bachelor & Spinster Ute
3. Chicks Ute
4. 4x4 Ute
5. Work Ute
6. Feral Ute
7. Classic Ute
8. Most Flags
9. Most Stickers



*WINNERS OF EACH CLASS ARE ELIGIBLE TO COMPETE IN THE BURNETT SUBCHAMBER FINALS  
TO BE HELD IN MONTO 6 JULY 2019*

*Please see Steward today for your NOMINATION FORMS*

### **PROUD SPONSORS**

- ❖ *Ultratune Bundaberg*
- ❖ *Fixit Autowreckers*

[Back to Contents](#)

## **SECTION 19 – DOG HIGH JUMP**

**Sunday 2 June 2019 approx. 1pm in front of the Grandstand**

**STEWARD:** John Hunter 0422 166 964  
shorty.hunter@hotmail.com

**ENTRY FEE:** \$5 PER Dog

**PRIZE MONEY:** **\$500 prize pool**

### **SPECIAL CONDITIONS:**

- ❖ Handlers must have a secondary handler on the day to work as a catcher
- ❖ All dogs competing must be sound and fit
- ❖ All dogs must attempt all heights

*Thanks to  
Biggenden  
Show Society  
for use of  
their jump  
equipment*



### *PROUD SPONSORS*

- ❖ *Sheds Constructions Qld Pty Ltd*
- ❖ *Colin Boyce MP*





## **YOUNG FARMERS CHALLENGE**

# **Adult Farmers Challenge**

**SATURDAY 1<sup>st</sup> June** - After Grand Parade approx 4pm

*Race against your mates in this hilarious, fast paced, family friendly event!*

**NOMINATIONS:** Amanda Mittelheuser 0401 265 840

**FREE TO ENTER**

- ❖ *Get your team of 4 together & nominate now!*
- ❖ *Limited number of teams so get your nomination in early*
- ❖ **NOMINATIONS CLOSE FRIDAY 24 MAY**



## **MINI & JUNIOR FARMERS CHALLENGES**

# **Mini & Junior Farmers Challenges**

**SUNDAY 2<sup>ND</sup> June** - 10am in front of the Grandstand

**FREE TO ENTER**

*Who said farming was just for adults?*

*The next generation of farmers is in training!*



**Mini Farmers aged 5 - 10**  
**Junior Farmers aged 11 - 14**

**To register:- At 9.00am**

- ❖ *Get your team of 4 together*
- ❖ *With an adult, go to the Function Centre*
- ❖ *Look for the "Register Here" sign*



**ADULT SUPERVISION PROVIDED DURING EVENT**





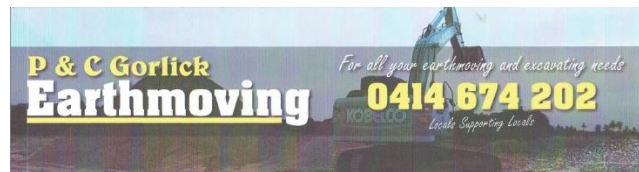
## SPONSORS

**GIN GIN AP&I SOCIETY INC SINCERELY THANK ALL OUR SPONSORS**  
**Without the support of these businesses and families we would not be able to bring you the Show. Please support these businesses which support our community.**



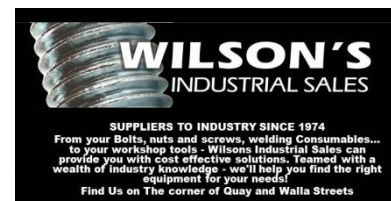
**Evolution**  
MINING

**GIN GIN  
LANDCARE**



 **Bendigo Bank**  
Bigger than a bank.

Gin Gin  
Community Bank® Branch



## **BUSINESS SPONSORS**

Ace Grinding & Saw Service  
Ace Hardware  
Anipro  
Art Plus Bundaberg  
Ballantyne Lodge  
Bendigo Gin Gin Community Bank  
BGA Services  
Blackwoods  
Boundary Creek Timber & T'port  
Boylans Produce  
Bundaberg Broadcasters  
Bundaberg Canegrowers  
Burnett Livestock  
Canegrowers Isis  
Colin Boyce MP  
Corbetts Sewing  
Craft Hire  
CS Horsegear  
DGZ Financial  
Double Diamond  
Elanora Park Brahman  
Elders Rural Services  
ESA of Gin Gin  
Finemore, Walters & Story  
Fixit Autowreckers  
Gin Gin & District Fine Arts  
Gin Gin & Dry  
Gin Gin Central Motel  
Gin Gin Community Broadcasters  
Gin Gin Historical Society  
Gin Gin Hotel  
Gin Gin Krazy Krafters  
Gin Gin Landcare  
Gin Gin Newsagency  
Gin Gin Produce Butchery  
Gin Gin QCWA  
Got Active Fitness  
H Dowling & Sons  
Horseland  
Hudson's Transport  
Isis Central Mill  
JBS Australia  
Kapernick Farms  
Ken O'Dowd MP  
Ken Weller Investments  
Kolan & District Electrical  
Kuskey Country Meats  
Landmark  
Lions Club Gin Gin  
Mango Tree Childcare Centre  
Marcelle's Hair Care

McDonald Murphy Machinery  
Mt Perry Fine Arts  
Orrcon Steel  
Peter Gorlick Earthmoving  
Possum Hollow Cottage  
Queensland Sugar Ltd  
Riverina Stockfeed  
RJ Dingle  
Rural Bank  
Shed Constructions Qld  
Silvana Grazing Co  
Spotlight Bundaberg  
Starburst Diner  
Sullivan Livestock  
Teacup Quilts  
Tobin Beef  
Tyrepower Gin Gin  
Ultratune Bundaberg  
Vaughans Transport  
Vetcross  
Volp Sawmill  
Wallaville QCWA  
Whip Into Wendy's  
Wilson's Drilling  
Wilson's Industrial Sales  
XXXX

## **INDIVIDUAL SPONSORS**

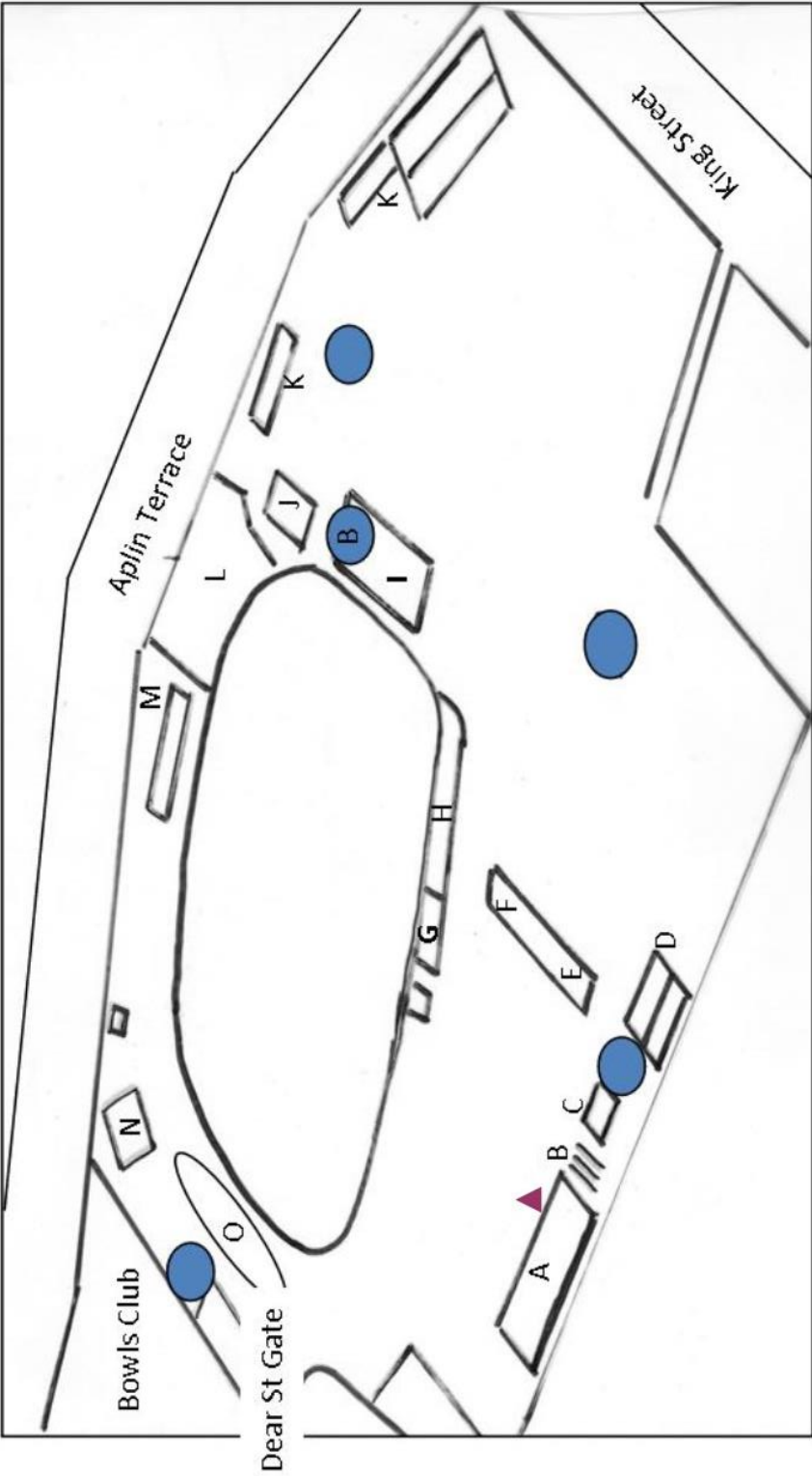
Apel Family  
Bailey, Dianne  
Baldwin, Shirley  
Bradford, Anne  
Braund, Laurie & Margaret  
Campbell, Vivian  
Chippendale, Midge  
Cooke, Beatrice  
Devantier Family  
Dwyer, Hayley  
Dyke Family  
Easy, Ron  
Eden Family  
Finlay, Gary & Karen  
Finlay, John & Sharyn  
Finlay, Nell  
Flanders, Kerryn  
Goodman, Glennis  
Harris, Lindy  
Honor, Wayne  
Howard, Lloyd  
Inskip, Rex  
Johnson, Barry OAM & Evelyn  
Johnson, Jamie

Kohring, Heather  
Larsen, Gloria  
Larsen, Ron & Amber  
Manderson, Judith  
Marland, Hazle OAM  
Maughan, Rita  
McLennan, Jenny  
McQuillen Family  
Pape, Marion  
Pohlman Family  
Roffey, Bill & Sue  
Scott, Dave & Jan  
Stehbens, Paul & Jane  
Stevens, Barbara  
Tobin, Brian & Jan  
Tobin, Warren & Jenny  
Walker, Bruce & Liz  
Warren, Scott

## **Burnett Sub Chamber 2019 Show Dates**

- ❖ **Gayndah**  
13 April
- ❖ **Mt Perry**  
20 April
- ❖ **Monto**  
27 & 28 April
- ❖ **Eidsvold**  
5 May
- ❖ **Munduberra**  
10 & 11 May
- ❖ **Biggenden**  
18 & 19 May
- ❖ **Isis**  
25 May
- ❖ **Bundaberg**  
29 - 31 May
- ❖ **Teebar**  
16 June
- ❖ **Brisbane Ekka**  
9 - 18 August

MAP OF THE GROUNDS



A - Pavilion	F - Old Bar	K - Stables	TOILETS
B - Cane Stand	G - Show Office	L - Prime Cattle Yards	TOILETS & Baby Change
C - Open Art Display	H - Woodchop	M - Stud Cattle Yards	ATM
D - Poultry Sheds	I - Canteen & Bar	N - Menshed	
E - Apex Camp Kitchen	J - Grandstand	O - Ute Muster (Sunday)	

Gin Gin Showgrounds



**VALE LANCE CISLOWSKI**

**20 December 1957 – 14 February 2019**

**On 14 February 2019 the Gin Gin community lost one of its best with the passing of Lance Cislowski.**

**Lance had been heavily involved in many aspects of our community and its organisations for over 40 years, willingly giving his time, expertise and wisdom – he will be sorely missed.**

**The Gin Gin Show Society was one of the many organisations to benefit from his generosity. Each year before the Show Lance and his men would arrive unannounced and check every power outlet in the grounds and ask where we needed more points or lights placed before the Show.**



**Lance knew the location of every underground power cable in the grounds, as if he had a map inside his head. He was a “details” man and fastidious when it came to safety.**

**With Andrew Maughan and Glenn Manderson, he’d set out all the stall holder sites in the showgrounds and was on hand all weekend to deal with any power issues that might arise. Even when things weren’t going smoothly, he’d shake his head, crack a joke and flash that smile –and you knew then that everything would be alright in no time at all.**

**Lance was always very obliging when I’d call to ask for a quote for the latest grant application I was working on. It often came down to the wire, but he always managed to get the job done and the invoice to me by the deadline and his contribution is evident all around the grounds.**

**The Management Committee and Members of the Gin Gin AP& I Society respectfully offer our condolences to Lance’s wife Cathie, his daughters Katrina and Jodie and their families; his parents Ted and Katie, his brothers and sisters and their families.**

**We all miss you Lance. We haven’t just lost an electrician – we’ve lost a very special friend and one of life’s true gentlemen. Rest in peace mate.**

[Back to Contents](#)

*Bee happy, bee humble, bee kind*

